

# IHC*easy* ANXA11 Ready-To-Use IHC Kit

Catalog Number: **KHC0708**

## General Information

**Sample type:**  
FFPE tissue

**Cited sample type:**

**Reactivity:**  
Human, Mouse, Rat

**Cited Reactivity:**

**Assay type:**  
Immunohistochemistry

**Primary antibody type:**  
Mouse Monoclonal

**Secondary antibody type:**  
Polymer-HRP-Goat anti-Mouse

## Kit Component

Component	Size	Concentration
Antigen Retrieval Buffer	100 mL	50×
Washing Buffer	100 mL ×2	20×
Blocking Buffer	5 mL	RTU
Primary Antibody	5 mL	RTU
Secondary Antibody	5 mL	RTU
Chromogen Component A	0.2 mL	RTU
Chromogen Component B	4 mL	RTU
Signal Enhancer	5 mL	RTU
Counter Staining Reagent	5 mL	RTU
Mounting Media	5 mL	RTU
Control Slide	1 slide (Optional)	FFPE
Datasheet	1 Copy	
Manual	1 Copy	

## Storage Instructions

All the reagents are stored at 2-8°C. The kit is stable for 6 months from the date of receipt.

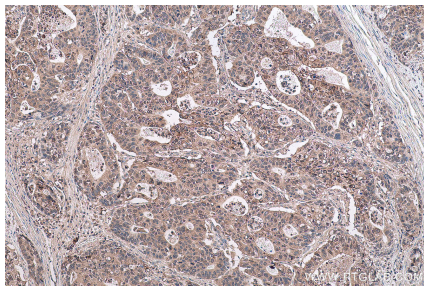
## Background

Annexin A11 (Anxa11) is one member of annexins that are Ca<sup>2+</sup>-regulated phospholipid-binding proteins. Annexin A11 plays an important role in cell division, differentiation, apoptosis, vesicle trafficking and Ca<sup>2+</sup> signaling. Annexin A11 dysregulation is involved in the progression, drug-resistance, recurrence of systemic autoimmune disease and cancer.

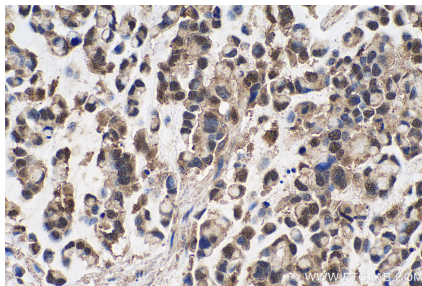
## Synonyms

56 kDa autoantigen, Annexin 11, annexin A11, Annexin XI, ANX11, ANXA11, CAP 50, CAP50

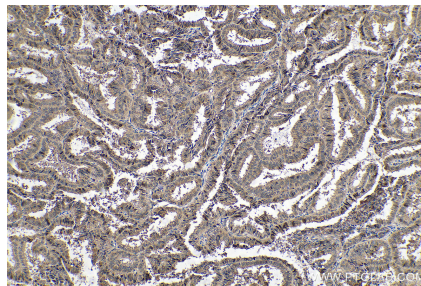
## Selected Validation Data



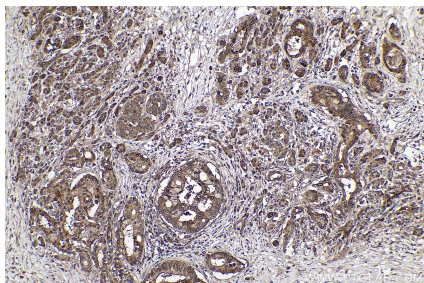
Immunohistochemical analysis of paraffin-embedded human stomach cancer tissue slide using KHC0708 (ANXA11 IHC Kit).



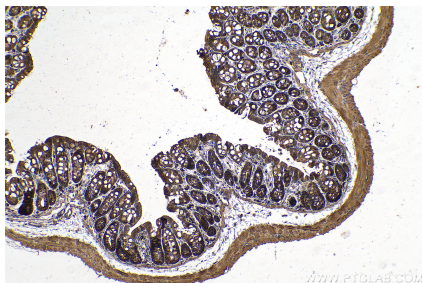
Immunohistochemical analysis of paraffin-embedded human colon cancer tissue slide using KHC0708 (ANXA11 IHC Kit).



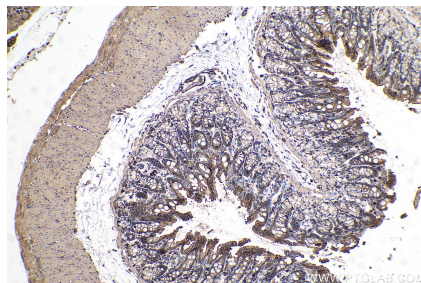
Immunohistochemical analysis of paraffin-embedded human ovary tumor tissue slide using KHC0708 (ANXA11 IHC Kit).



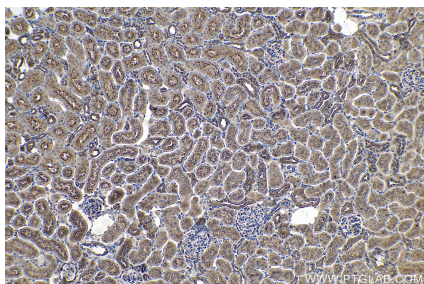
Immunohistochemical analysis of paraffin-embedded human pancreas cancer tissue slide using KHC0708 (ANXA11 IHC Kit).



Immunohistochemical analysis of paraffin-embedded mouse colon tissue slide using KHC0708 (ANXA11 IHC Kit).



Immunohistochemical analysis of paraffin-embedded rat colon tissue slide using KHC0708 (ANXA11 IHC Kit).



Immunohistochemical analysis of paraffin-embedded rat kidney tissue slide using KHC0708 (ANXA11 IHC Kit).