

IHC*easy* PARVA Ready-To-Use IHC Kit

Catalog Number: **KHC0720**

General Information

Sample type:
FFPE tissue
Cited sample type:
Reactivity:
Human, Mouse, Rat
Cited Reactivity:

Assay type:
Immunohistochemistry
Primary antibody type:
Mouse Monoclonal
Secondary antibody type:
Polymer-HRP-Goat anti-Mouse

Kit Component

| Component | Size | Concentration |
|--------------------------|--------------------|---------------|
| Antigen Retrieval Buffer | 100 mL | 50× |
| Washing Buffer | 100 mL ×2 | 20× |
| Blocking Buffer | 5 mL | RTU |
| Primary Antibody | 5 mL | RTU |
| Secondary Antibody | 5 mL | RTU |
| Chromogen Component A | 0.2 mL | RTU |
| Chromogen Component B | 4 mL | RTU |
| Signal Enhancer | 5 mL | RTU |
| Counter Staining Reagent | 5 mL | RTU |
| Mounting Media | 5 mL | RTU |
| Control Slide | 1 slide (Optional) | FFPE |
| Datasheet | 1 Copy | |
| Manual | 1 Copy | |

Storage Instructions

All the reagents are stored at 2-8°C. The kit is stable for 6 months from the date of receipt.

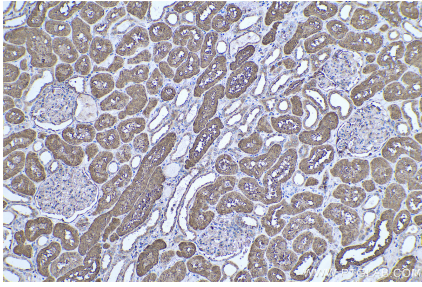
Background

α -Parvin (PARVA), also named as MXRA2, Actopaxin and CH-ILKBP, belongs to the parvin family. It probably plays a role in the regulation of cell adhesion and cytoskeleton organization. Primary antibody in this kit is specific to α -Parvin.

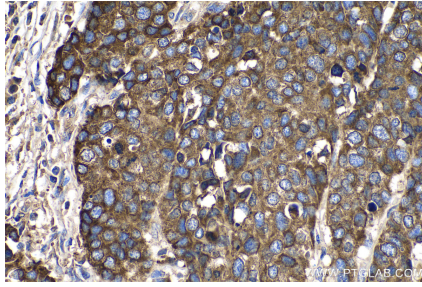
Synonyms

Actopaxin, Alpha parvin, CH ILKBP, FLJ10793, FLJ12254, MXRA2, PARVA, parvin, alpha

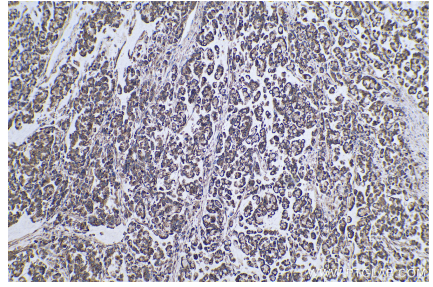
Selected Validation Data



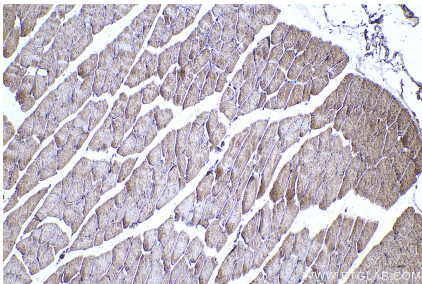
Immunohistochemical analysis of paraffin-embedded human kidney tissue slide using KHC0720 (PARVA IHC Kit).



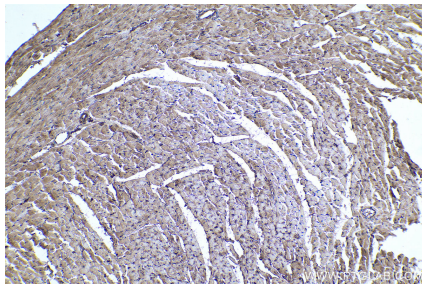
Immunohistochemical analysis of paraffin-embedded human stomach cancer tissue slide using KHC0720 (PARVA IHC Kit).



Immunohistochemical analysis of paraffin-embedded human colon cancer tissue slide using KHC0720 (PARVA IHC Kit).



Immunohistochemical analysis of paraffin-embedded mouse skeletal muscle tissue slide using KHC0720 (PARVA IHC Kit).



Immunohistochemical analysis of paraffin-embedded rat heart tissue slide using KHC0720 (PARVA IHC Kit).