

IHC*easy* SRSF3 Ready-To-Use IHC Kit

Catalog Number: **KHC0730**

General Information

Sample type:
FFPE tissue
Cited sample type:
Reactivity:
Human, Mouse, Rat
Cited Reactivity:

Assay type:
Immunohistochemistry
Primary antibody type:
Rabbit Polyclonal
Secondary antibody type:
Polymer-HRP-Goat anti-Rabbit

Kit Component

Component	Size	Concentration
Antigen Retrieval Buffer	100 mL	50×
Washing Buffer	100 mL ×2	20×
Blocking Buffer	5 mL	RTU
Primary Antibody	5 mL	RTU
Secondary Antibody	5 mL	RTU
Chromogen Component A	0.2 mL	RTU
Chromogen Component B	4 mL	RTU
Signal Enhancer	5 mL	RTU
Counter Staining Reagent	5 mL	RTU
Mounting Media	5 mL	RTU
Control Slide	1 slide (Optional)	FFPE
Datasheet	1 Copy	
Manual	1 Copy	

Storage Instructions

All the reagents are stored at 2-8°C. The kit is stable for 6 months from the date of receipt.

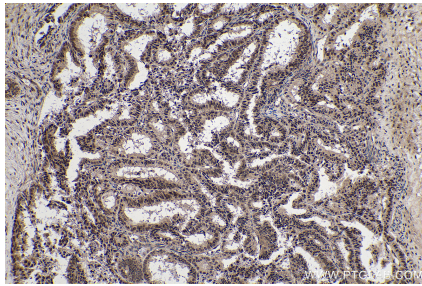
Background

SFRS3, also named as SRSF3 and SRP20, belongs to the splicing factor SR family. It may be involved in RNA processing in relation with cellular proliferation and/or maturation. SFRS3 is one of the cognate factors. It is a proto-oncogene critical for cell proliferation and tumor induction and maintenance.

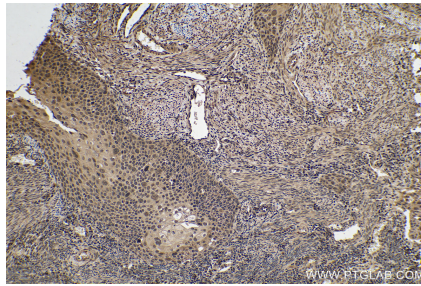
Synonyms

Pre mRNA splicing factor SRP20, SFRS3, SRp20, SRSF3

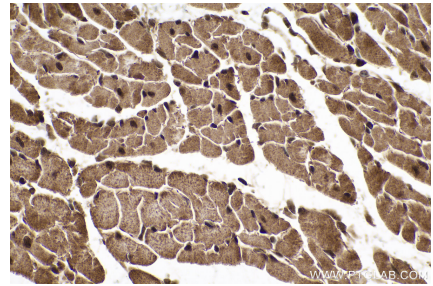
Selected Validation Data



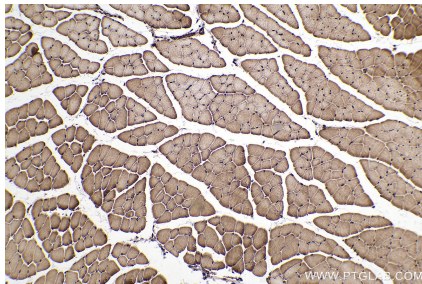
Immunohistochemical analysis of paraffin-embedded human ovary tumor tissue slide using KHC0730 (SRSF3 IHC Kit).



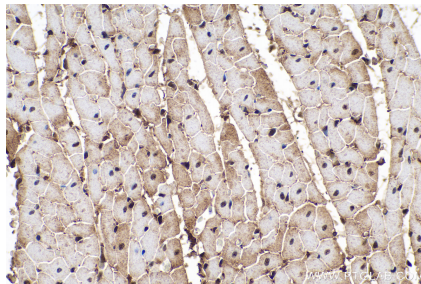
Immunohistochemical analysis of paraffin-embedded human cervical cancer tissue slide using KHC0730 (SRSF3 IHC Kit).



Immunohistochemical analysis of paraffin-embedded mouse heart tissue slide using KHC0730 (SRSF3 IHC Kit).



Immunohistochemical analysis of paraffin-embedded mouse skeletal muscle tissue slide using KHC0730 (SRSF3 IHC Kit).



Immunohistochemical analysis of paraffin-embedded rat heart tissue slide using KHC0730 (SRSF3 IHC Kit).