

# IHC*easy* KRT15 Ready-To-Use IHC Kit

Catalog Number: **KHC0752**

## General Information

**Sample type:**  
FFPE tissue

**Cited sample type:**

**Reactivity:**  
Human, Mouse, Rat

**Cited Reactivity:**

**Assay type:**  
Immunohistochemistry

**Primary antibody type:**  
Mouse Monoclonal

**Secondary antibody type:**  
Polymer-HRP-Goat anti-Mouse

## Kit Component

Component	Size	Concentration
Antigen Retrieval Buffer	100 mL	50×
Washing Buffer	100 mL ×2	20×
Blocking Buffer	5 mL	RTU
Primary Antibody	5 mL	RTU
Secondary Antibody	5 mL	RTU
Chromogen Component A	0.2 mL	RTU
Chromogen Component B	4 mL	RTU
Signal Enhancer	5 mL	RTU
Counter Staining Reagent	5 mL	RTU
Mounting Media	5 mL	RTU
Control Slide	1 slide (Optional)	FFPE
Datasheet	1 Copy	
Manual	1 Copy	

## Storage Instructions

All the reagents are stored at 2-8°C. The kit is stable for 6 months from the date of receipt.

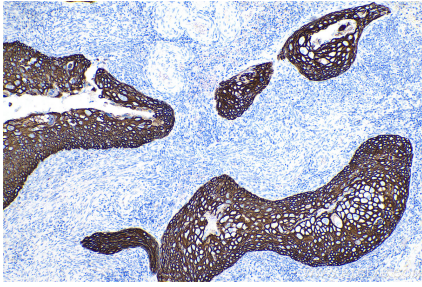
## Background

Keratins are a large family of proteins that form the intermediate filament cytoskeleton of epithelial cells. Keratin expression is highly regulated, tissue specific, and varies according to cell-state. Type I keratins consist of acidic, low molecular weight proteins. Type 2 keratins consist of basic or neutral, high molecular weight proteins. Keratin 15 is a type I cytokeratin. It is found in some progenitor basal cells within complex epithelia.

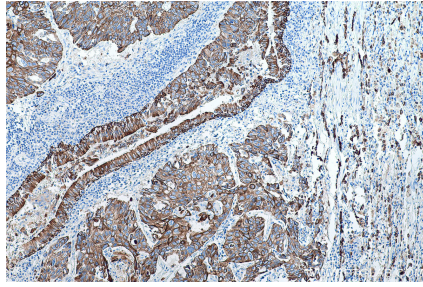
## Synonyms

CK 15, CK15, Cytokeratin 15, K15, K1CO, keratin 15, KRT15, KRTB

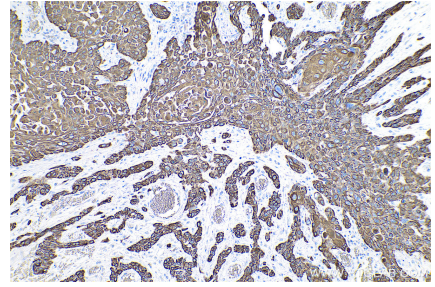
## Selected Validation Data



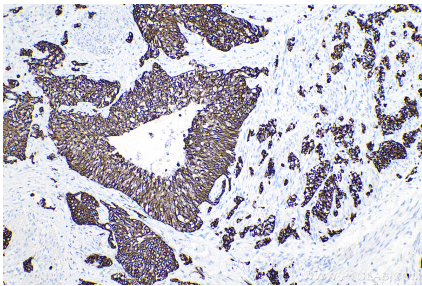
Immunohistochemical analysis of paraffin-embedded human cervical cancer tissue slide using KHC0752 (KRT15 IHC Kit).



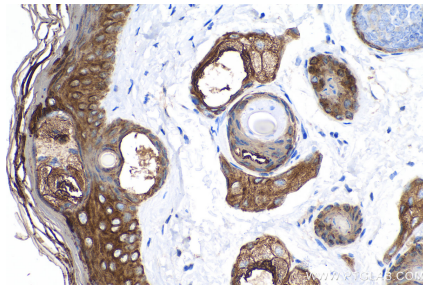
Immunohistochemical analysis of paraffin-embedded human lung cancer tissue slide using KHC0752 (KRT15 IHC Kit).



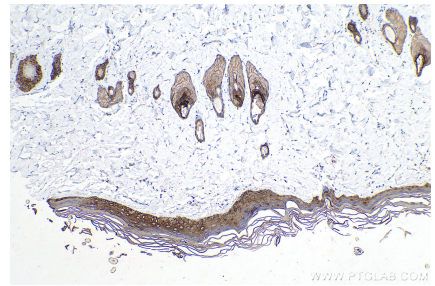
Immunohistochemical analysis of paraffin-embedded human oesophagus cancer tissue slide using KHC0752 (KRT15 IHC Kit).



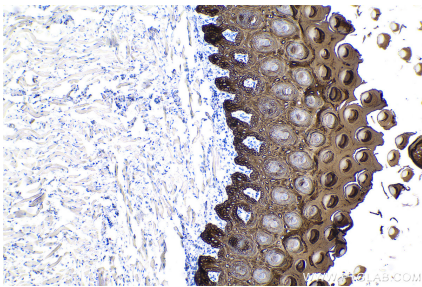
Immunohistochemical analysis of paraffin-embedded human urothelial carcinoma tissue slide using KHC0752 (KRT15 IHC Kit).



Immunohistochemical analysis of paraffin-embedded mouse skin tissue slide using KHC0752 (KRT15 IHC Kit).



Immunohistochemical analysis of paraffin-embedded rat skin tissue slide using KHC0752 (KRT15 IHC Kit).



Immunohistochemical analysis of paraffin-embedded rat tongue tissue slide using KHC0752 (KRT15 IHC Kit).