

IHC*easy* UBE2I/UBC9 Ready-To-Use IHC Kit

Catalog Number: **KHC0905**

General Information

Sample type:
FFPE tissue
Cited sample type:
Reactivity:
Human
Cited Reactivity:

Assay type:
Immunohistochemistry
Primary antibody type:
Mouse Monoclonal
Secondary antibody type:
Polymer-HRP-Goat anti-Mouse

Kit Component

Component	Size	Concentration
Antigen Retrieval Buffer	100 mL	50×
Washing Buffer	100 mL ×2	20×
Blocking Buffer	5 mL	RTU
Primary Antibody	5 mL	RTU
Secondary Antibody	5 mL	RTU
Chromogen Component A	0.2 mL	RTU
Chromogen Component B	4 mL	RTU
Signal Enhancer	5 mL	RTU
Counter Staining Reagent	5 mL	RTU
Mounting Media	5 mL	RTU
Control Slide	1 slide (Optional)	FFPE
Datasheet	1 Copy	
Manual	1 Copy	

Storage Instructions

All the reagents are stored at 2-8°C. The kit is stable for 6 months from the date of receipt.

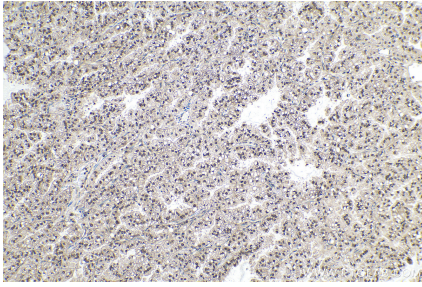
Background

UBC9 is also named as UBE2I, UBCE9 and belongs to the ubiquitin-conjugating enzyme family. It is a homologue of the E2 ubiquitin conjugating enzyme and participates in the covalent linking of SUMO-1 molecule to the target protein. This protein is present at a high level in spleen and lung. Moderate level of UBC9 is detected in kidney and liver.

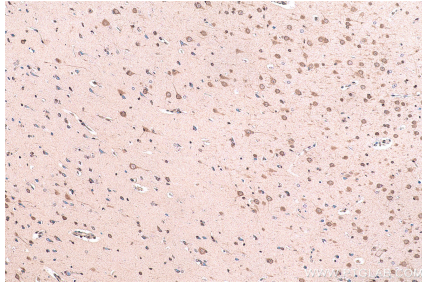
Synonyms

C358B7.1, E2, UBE2I, P18, SUMO conjugating enzyme UBC9, SUMO protein ligase, UBC9, UBCE9, UBE2I, Ubiquitin carrier protein 9, Ubiquitin carrier protein I, Ubiquitin protein ligase I

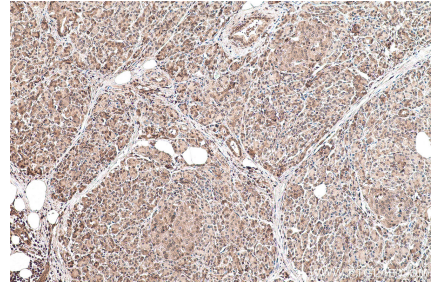
Selected Validation Data



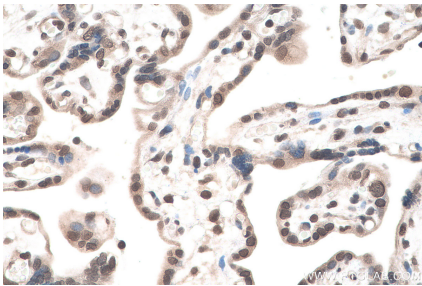
Immunohistochemical analysis of paraffin-embedded human lung cancer tissue slide using KHC0905 (UBE21/UBC9 IHC Kit).



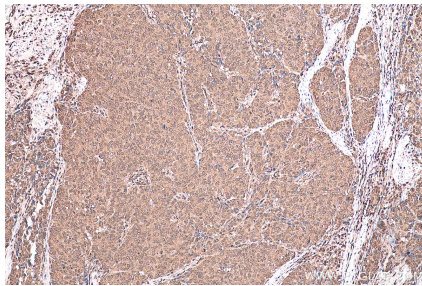
Immunohistochemical analysis of paraffin-embedded human gliomas tissue slide using KHC0905 (UBE21/UBC9 IHC Kit).



Immunohistochemical analysis of paraffin-embedded human pancreas cancer tissue slide using KHC0905 (UBE21/UBC9 IHC Kit).



Immunohistochemical analysis of paraffin-embedded human placenta tissue slide using KHC0905 (UBE21/UBC9 IHC Kit).



Immunohistochemical analysis of paraffin-embedded human stomach cancer tissue slide using KHC0905 (UBE21/UBC9 IHC Kit).