

IHC*easy* SEC24C Ready-To-Use IHC Kit

Catalog Number: **KHC0994**

General Information

Sample type:
FFPE tissue

Cited sample type:

Reactivity:
Human, Mouse, Rat

Cited Reactivity:

Assay type:
Immunohistochemistry

Primary antibody type:
Rabbit Polyclonal

Secondary antibody type:
Polymer-HRP-Goat anti-Rabbit

Kit Component

Component	Size	Concentration
Antigen Retrieval Buffer	100 mL	50×
Washing Buffer	100 mL ×2	20×
Blocking Buffer	5 mL	RTU
Primary Antibody	5 mL	RTU
Secondary Antibody	5 mL	RTU
Chromogen Component A	0.2 mL	RTU
Chromogen Component B	4 mL	RTU
Signal Enhancer	5 mL	RTU
Counter Staining Reagent	5 mL	RTU
Mounting Media	5 mL	RTU
Control Slide	1 slide (Optional)	FFPE
Datasheet	1 Copy	
Manual	1 Copy	

Storage Instructions

All the reagents are stored at 2-8°C. The kit is stable for 6 months from the date of receipt.

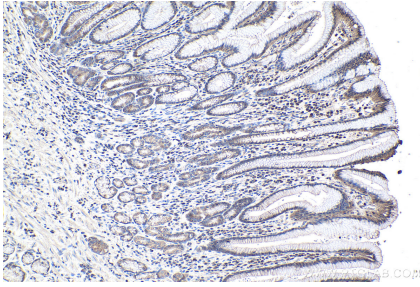
Background

COPII-coated vesicles mediate anterograde transport from the ER to the Golgi apparatus. COPII is composed of three parts: two coat protein complexes (Sec23/24 complex and Sec13/31 complex) and one small GTP-binding protein, Sar1. Sec24 subunit of the coat complex has been implicated in cargo recognition. In mammal cells there are four Sec24 isoforms, termed Sec24A, Sec24B, Sec24C, and Sec24D.

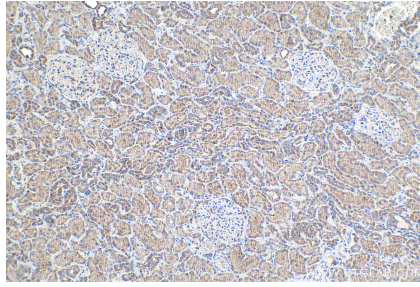
Synonyms

KIAA0079, SEC24 related protein C, SEC24C

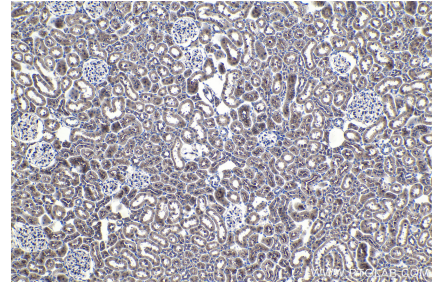
Selected Validation Data



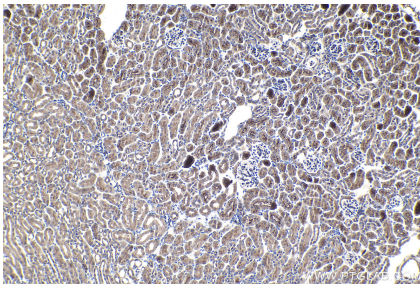
Immunohistochemical analysis of paraffin-embedded human stomach cancer tissue slide using KHC0994 (SEC24C IHC Kit).



Immunohistochemical analysis of paraffin-embedded human kidney tissue slide using KHC0994 (SEC24C IHC Kit).



Immunohistochemical analysis of paraffin-embedded rat kidney tissue slide using KHC0994 (SEC24C IHC Kit).



Immunohistochemical analysis of paraffin-embedded mouse kidney tissue slide using KHC0994 (SEC24C IHC Kit).