

IHC*easy* VISTA Ready-To-Use IHC Kit

Catalog Number: **KHC1074**

General Information

Sample type:
FFPE tissue
Cited sample type:
Reactivity:
Human
Cited Reactivity:

Assay type:
Immunohistochemistry
Primary antibody type:
Rabbit Polyclonal
Secondary antibody type:
Polymer-HRP-Goat anti-Rabbit

Kit Component

Component	Size	Concentration
Antigen Retrieval Buffer	100 mL	50×
Washing Buffer	100 mL ×2	20×
Blocking Buffer	5 mL	RTU
Primary Antibody	5 mL	RTU
Secondary Antibody	5 mL	RTU
Chromogen Component A	0.2 mL	RTU
Chromogen Component B	4 mL	RTU
Signal Enhancer	5 mL	RTU
Counter Staining Reagent	5 mL	RTU
Mounting Media	5 mL	RTU
Control Slide	1 slide (Optional)	FFPE
Datasheet	1 Copy	
Manual	1 Copy	

Storage Instructions

All the reagents are stored at 2-8°C. The kit is stable for 6 months from the date of receipt.

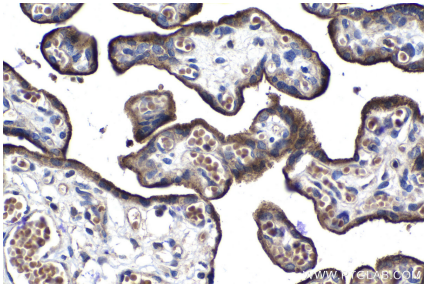
Background

VISTA, also known as platelet receptor Gi24, B7-H5, C10orf54, Dies1, PD-1H and SISP1, is a member of the immunoglobulin superfamily. It serves as not only as a positive regulator but also as a substrate of MT1-MMP, and contributes at least in part to tumor invasion.

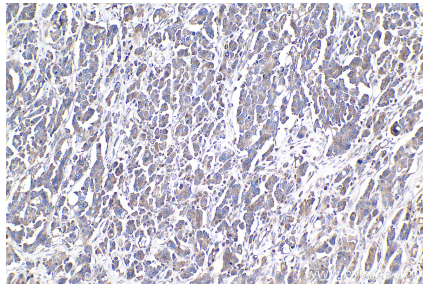
Synonyms

B7-H5, C10orf54, GI24, Platelet receptor Gi24, PP2135, SISP1, UNQ730/PRO1412, VISTA, VSIR

Selected Validation Data



Immunohistochemical analysis of paraffin-embedded human placenta tissue slide using KHC1074 (VISTA IHC Kit).



Immunohistochemical analysis of paraffin-embedded human colon cancer tissue slide using KHC1074 (VISTA IHC Kit).