

# IHC*easy* ATP1B3 Ready-To-Use IHC Kit

Catalog Number: **KHC1116**

## General Information

Sample type:  
FFPE tissue  
Cited sample type:  
Reactivity:  
Human  
Cited Reactivity:

Assay type:  
Immunohistochemistry  
Primary antibody type:  
Mouse Monoclonal  
Secondary antibody type:  
Polymer-HRP-Goat anti-Mouse

## Kit Component

Component	Size	Concentration
Antigen Retrieval Buffer	100 mL	50×
Washing Buffer	100 mL ×2	20×
Blocking Buffer	5 mL	RTU
Primary Antibody	5 mL	RTU
Secondary Antibody	5 mL	RTU
Chromogen Component A	0.2 mL	RTU
Chromogen Component B	4 mL	RTU
Signal Enhancer	5 mL	RTU
Counter Staining Reagent	5 mL	RTU
Mounting Media	5 mL	RTU
Control Slide	1 slide (Optional)	FFPE
Datasheet	1 Copy	
Manual	1 Copy	

## Storage Instructions

All the reagents are stored at 2-8°C. The kit is stable for 6 months from the date of receipt.

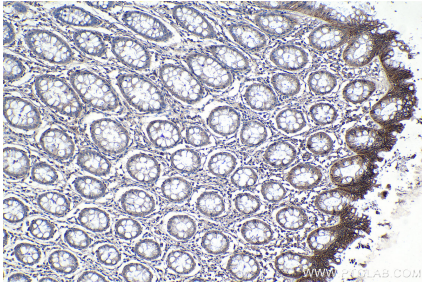
## Background

ATP1B3 (also known as CD298) is the  $\beta$  3 subunit of Na<sup>+</sup>/K<sup>+</sup>-ATPase which functions to maintain sodium and potassium gradients across membranes involved in cellular activities. ATP1B3 is a glycosylated protein and there are fully and intermediately glycosylated forms of ATP1B3 in mammalian cells.

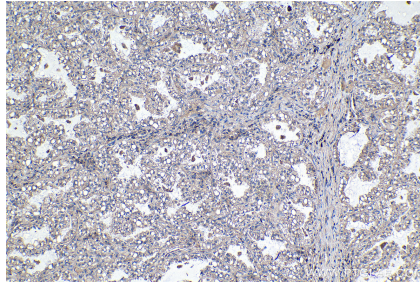
## Synonyms

ATP1B3, ATPB 3, CD298, FLJ29027

## Selected Validation Data



Immunohistochemical analysis of paraffin-embedded human colon tissue slide using KHC1116 (ATP1B3 IHC Kit).



Immunohistochemical analysis of paraffin-embedded human lung cancer tissue slide using KHC1116 (ATP1B3 IHC Kit).