

IHC*easy* IL23A Ready-To-Use IHC Kit

Catalog Number: **KHC1135**

General Information

Sample type:
FFPE tissue
Cited sample type:
Reactivity:
Human
Cited Reactivity:

Assay type:
Immunohistochemistry
Primary antibody type:
Mouse Monoclonal
Secondary antibody type:
Polymer-HRP-Goat anti-Mouse

Kit Component

Component	Size	Concentration
Antigen Retrieval Buffer	100 mL	50×
Washing Buffer	100 mL ×2	20×
Blocking Buffer	5 mL	RTU
Primary Antibody	5 mL	RTU
Secondary Antibody	5 mL	RTU
Chromogen Component A	0.2 mL	RTU
Chromogen Component B	4 mL	RTU
Signal Enhancer	5 mL	RTU
Counter Staining Reagent	5 mL	RTU
Mounting Media	5 mL	RTU
Control Slide	1 slide (Optional)	FFPE
Datasheet	1 Copy	
Manual	1 Copy	

Storage Instructions

All the reagents are stored at 2-8°C. The kit is stable for 6 months from the date of receipt.

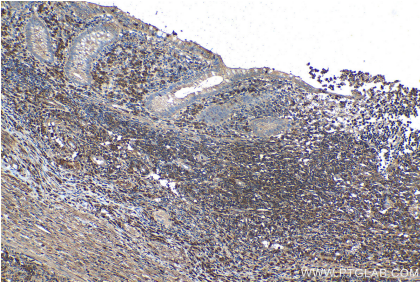
Background

Interleukin 23 (IL-23) is a member of the IL12 cytokine family and composed of two subunits, IL12p40 and IL23p19. It is produced by antigen presenting cells and has been shown to promote the production and survival of a distinct lineage of T-cells called TH17 cells. A functional receptor for IL-23 (the IL-23 receptor) has been identified and is composed of IL-12R β 1 and IL-23R. IL-23 is expressed chiefly by the macrophages and DCs. The IL-23R is found on memory T cells, NKT cells, macrophages, DCs, and naive T cells upon activation by TGF- β and IL-6. The main biological effects of IL-23 identified initially consist of stimulation of antigen presentation by DCs, T cell differentiation to Th17 cells, and production of interferon- γ (IFN- γ). IL-23 acts also as an end-stage effector cytokine through direct action on macrophages.

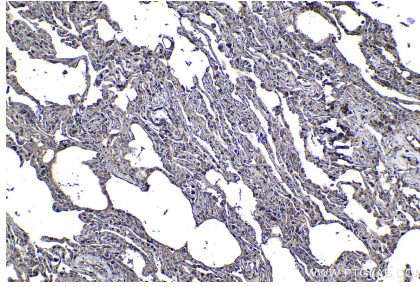
Synonyms

IL 23, IL 23 A, IL 23 subunit alpha, IL 23A, IL 23p19, IL23A, IL-23A, IL23P19, Interleukin 23 subunit alpha, Interleukin 23 subunit p19, P19, SGRF

Selected Validation Data



Immunohistochemical analysis of paraffin-embedded human appendicitis tissue slide using KHC1135 (IL23A IHC Kit).



Immunohistochemical analysis of paraffin-embedded human lung tissue slide using KHC1135 (IL23A IHC Kit).