

IHC*easy* ASPH Ready-To-Use IHC Kit

Catalog Number: **KHC1234**

General Information

Sample type:
FFPE tissue
Cited sample type:
Reactivity:
Human, Mouse, Rat
Cited Reactivity:

Assay type:
Immunohistochemistry
Primary antibody type:
Rabbit Polyclonal
Secondary antibody type:
Polymer-HRP-Goat anti-Rabbit

Kit Component

Component	Size	Concentration
Antigen Retrieval Buffer	100 mL	50×
Washing Buffer	100 mL ×2	20×
Blocking Buffer	5 mL	RTU
Primary Antibody	5 mL	RTU
Secondary Antibody	5 mL	RTU
Chromogen Component A	0.2 mL	RTU
Chromogen Component B	4 mL	RTU
Signal Enhancer	5 mL	RTU
Counter Staining Reagent	5 mL	RTU
Mounting Media	5 mL	RTU
Control Slide	1 slide (Optional)	FFPE
Datasheet	1 Copy	
Manual	1 Copy	

Storage Instructions

All the reagents are stored at 2-8°C. The kit is stable for 6 months from the date of receipt.

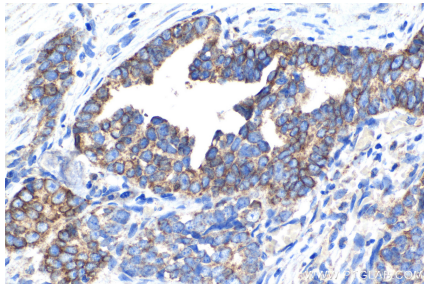
Background

Aspartate-β-hydroxylase (ASPH; termed AAH in older literature) has been implicated in the cross-talk among all of these signaling pathways. Correspondingly, ASPH is expressed at high levels in many malignant neoplasms of different histogeneses.

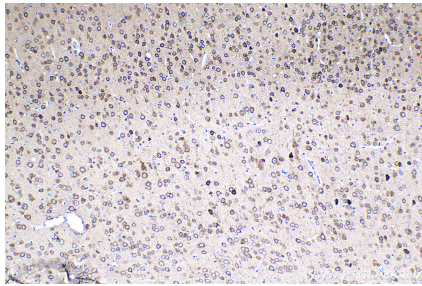
Synonyms

AAH, ASP beta hydroxylase, aspartate beta hydroxylase, ASPH, BAH, CASQ2BP1, HAAH, JCTN, junctin

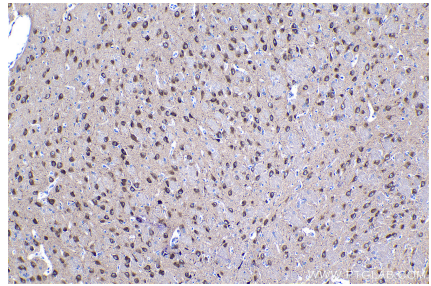
Selected Validation Data



Immunohistochemical analysis of paraffin-embedded human ovary tumor tissue slide using KHC1234 (ASPH IHC Kit).



Immunohistochemical analysis of paraffin-embedded mouse brain tissue slide using KHC1234 (ASPH IHC Kit).



Immunohistochemical analysis of paraffin-embedded rat brain tissue slide using KHC1234 (ASPH IHC Kit).