

# IHC*easy* UQCRB Ready-To-Use IHC Kit

Catalog Number: **KHC1400**

## General Information

**Sample type:**  
FFPE tissue

**Cited sample type:**

**Reactivity:**  
Human, Mouse, Rat

**Cited Reactivity:**

**Assay type:**  
Immunohistochemistry

**Primary antibody type:**  
Rabbit Polyclonal

**Secondary antibody type:**  
Polymer-HRP-Goat anti-Rabbit

## Kit Component

Component	Size	Concentration
Antigen Retrieval Buffer	100 mL	50×
Washing Buffer	100 mL ×2	20×
Blocking Buffer	5 mL	RTU
Primary Antibody	5 mL	RTU
Secondary Antibody	5 mL	RTU
Chromogen Component A	0.2 mL	RTU
Chromogen Component B	4 mL	RTU
Signal Enhancer	5 mL	RTU
Counter Staining Reagent	5 mL	RTU
Mounting Media	5 mL	RTU
Control Slide	1 slide (Optional)	FFPE
Datasheet	1 Copy	
Manual	1 Copy	

## Storage Instructions

All the reagents are stored at 2-8°C. The kit is stable for 6 months from the date of receipt.

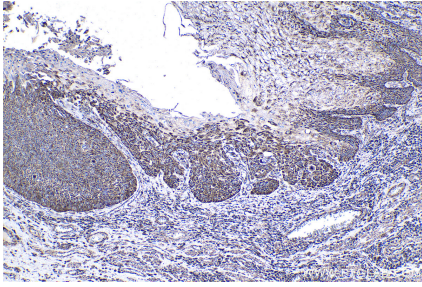
## Background

UQCRB(ubiquinol-cytochrome c reductase binding protein) is also named as UQBP, complex III subunit VII and belongs to the UQCRB/QCR7 family. It is a 13.4 kDa subunit of mitochondrial complex III, plays a crucial role in hypoxia-induced angiogenesis via mitochondrial reactive oxygen species (ROS)-mediated signaling.

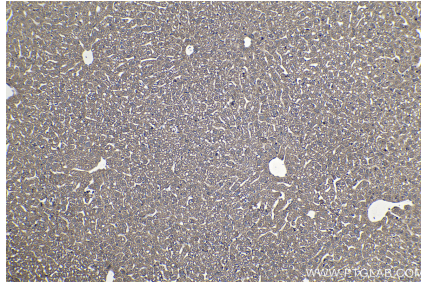
## Synonyms

Complex III subunit 7, Complex III subunit VII, QCR7, QP C, QPC, UQBC, UQBP, UQCRB, UQPC

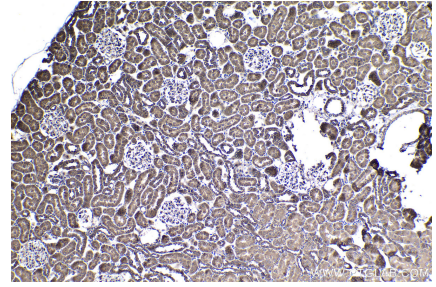
## Selected Validation Data



Immunohistochemical analysis of paraffin-embedded human oesophagus cancer tissue slide using KHC1400 (UQCRB IHC Kit).



Immunohistochemical analysis of paraffin-embedded mouse liver tissue slide using KHC1400 (UQCRB IHC Kit).



Immunohistochemical analysis of paraffin-embedded rat kidney tissue slide using KHC1400 (UQCRB IHC Kit).