

IHC*easy* MTA2 Ready-To-Use IHC Kit

Catalog Number: **KHC1481**

General Information

Sample type:
FFPE tissue

Cited sample type:

Reactivity:
Human, Mouse, Rat

Cited Reactivity:

Assay type:
Immunohistochemistry

Primary antibody type:
Rabbit Polyclonal

Secondary antibody type:
Polymer-HRP-Goat anti-Rabbit

Kit Component

| Component | Size | Concentration |
|--------------------------|--------------------|---------------|
| Antigen Retrieval Buffer | 100 mL | 50× |
| Washing Buffer | 100 mL ×2 | 20× |
| Blocking Buffer | 5 mL | RTU |
| Primary Antibody | 5 mL | RTU |
| Secondary Antibody | 5 mL | RTU |
| Chromogen Component A | 0.2 mL | RTU |
| Chromogen Component B | 4 mL | RTU |
| Signal Enhancer | 5 mL | RTU |
| Counter Staining Reagent | 5 mL | RTU |
| Mounting Media | 5 mL | RTU |
| Control Slide | 1 slide (Optional) | FFPE |
| Datasheet | 1 Copy | |
| Manual | 1 Copy | |

Storage Instructions

All the reagents are stored at 2-8°C. The kit is stable for 6 months from the date of receipt.

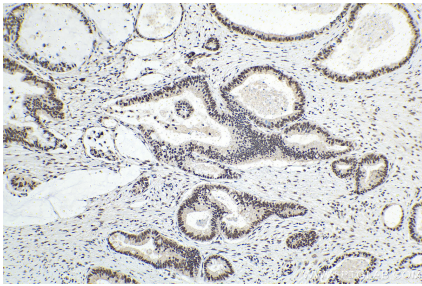
Background

Metastasis-associated protein MTA2, also named as MTA1L1 or PID, is a 668 amino acid protein, which contains one BAH domain, one ELM2 domain, one GATA-type zinc finger and one SANT domain. MTA2 localizes in the nucleus and is widely expressed in many tissues. MTA2 may be involved in the regulation of gene expression as repressor and activator.

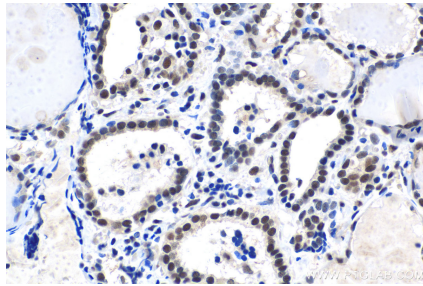
Synonyms

Metastasis associated 1 like 1, MTA1 L1 protein, MTA1L1, MTA2, PID

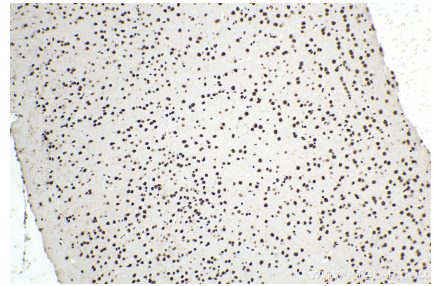
Selected Validation Data



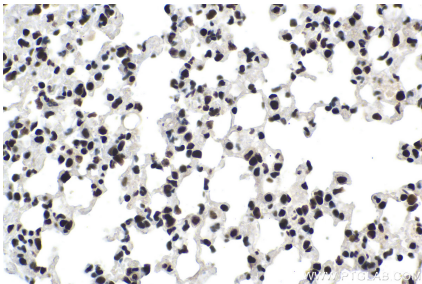
Immunohistochemical analysis of paraffin-embedded human pancreas cancer tissue slide using KHC1481 (MTA2 IHC Kit).



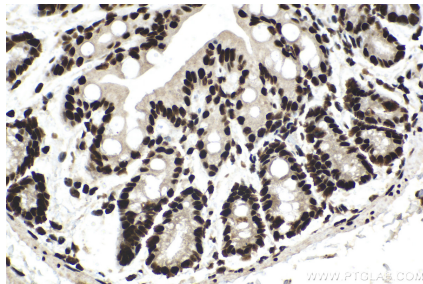
Immunohistochemical analysis of paraffin-embedded human thyroid cancer tissue slide using KHC1481 (MTA2 IHC Kit).



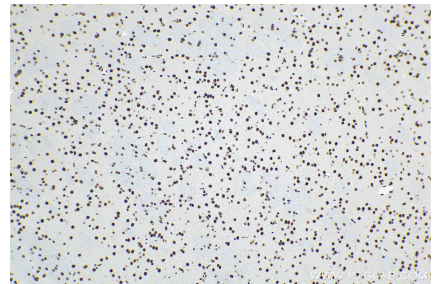
Immunohistochemical analysis of paraffin-embedded mouse brain tissue slide using KHC1481 (MTA2 IHC Kit).



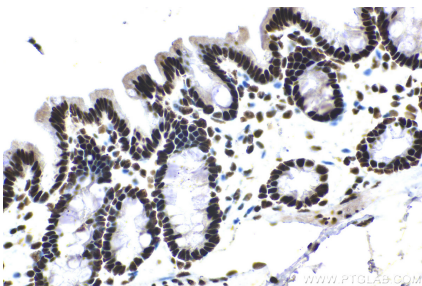
Immunohistochemical analysis of paraffin-embedded mouse lung tissue slide using KHC1481 (MTA2 IHC Kit).



Immunohistochemical analysis of paraffin-embedded mouse colon tissue slide using KHC1481 (MTA2 IHC Kit).



Immunohistochemical analysis of paraffin-embedded rat brain tissue slide using KHC1481 (MTA2 IHC Kit).



Immunohistochemical analysis of paraffin-embedded rat colon tissue slide using KHC1481 (MTA2 IHC Kit).