

IHC*easy* TCF7 Ready-To-Use IHC Kit

Catalog Number: **KHC1599**

General Information

Sample type:
FFPE tissue
Cited sample type:
Reactivity:
Human, Mouse, Rat
Cited Reactivity:

Assay type:
Immunohistochemistry
Primary antibody type:
Rabbit Polyclonal
Secondary antibody type:
Polymer-HRP-Goat anti-Rabbit

Kit Component

Component	Size	Concentration
Antigen Retrieval Buffer	100 mL	50×
Washing Buffer	100 mL ×2	20×
Blocking Buffer	5 mL	RTU
Primary Antibody	5 mL	RTU
Secondary Antibody	5 mL	RTU
Chromogen Component A	0.2 mL	RTU
Chromogen Component B	4 mL	RTU
Signal Enhancer	5 mL	RTU
Counter Staining Reagent	5 mL	RTU
Mounting Media	5 mL	RTU
Control Slide	1 slide (Optional)	FFPE
Datasheet	1 Copy	
Manual	1 Copy	

Storage Instructions

All the reagents are stored at 2-8°C. The kit is stable for 6 months from the date of receipt.

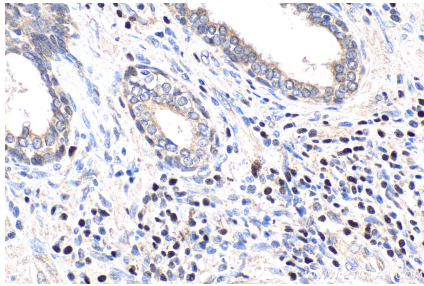
Background

TCF7, also known as TCF1, belongs to the TCF/LEF family. TCF7 is part of the Wnt signaling pathway and plays an important role in the differentiation and self-renewal of memory T cells. It has been found that TCF7 is necessary to revive T cells in response to PD-1 blockade against viral infection or cancer. TCF7 is mainly expressed in T-cells and is also detected in proliferating intestinal epithelial cells and in the basal epithelial cells of mammary gland epithelium.

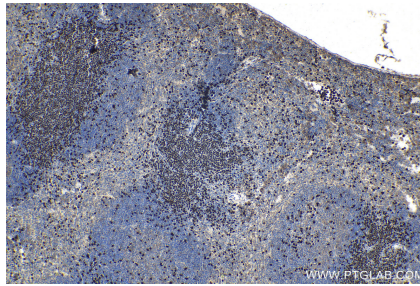
Synonyms

T cell factor 1, TCF 1, TCF 7, TCF1, TCF7, Transcription factor 7

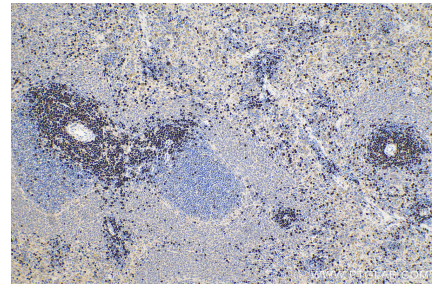
Selected Validation Data



Immunohistochemical analysis of paraffin-embedded human prostate cancer tissue slide using KHC1599 (TCF7 IHC Kit).



Immunohistochemical analysis of paraffin-embedded mouse spleen tissue slide using KHC1599 (TCF7 IHC Kit).



Immunohistochemical analysis of paraffin-embedded rat spleen tissue slide using KHC1599 (TCF7 IHC Kit).