

IHC*easy* EWSR1/EWS Ready-To-Use IHC Kit

Catalog Number: **KHC1667**

General Information

Sample type:
FFPE tissue

Cited sample type:

Reactivity:
Human, Mouse, Rat

Cited Reactivity:

Assay type:
Immunohistochemistry

Primary antibody type:
Rabbit Polyclonal

Secondary antibody type:
Polymer-HRP-Goat anti-Rabbit

Kit Component

Component	Size	Concentration
Antigen Retrieval Buffer	100 mL	50×
Washing Buffer	100 mL ×2	20×
Blocking Buffer	5 mL	RTU
Primary Antibody	5 mL	RTU
Secondary Antibody	5 mL	RTU
Chromogen Component A	0.2 mL	RTU
Chromogen Component B	4 mL	RTU
Signal Enhancer	5 mL	RTU
Counter Staining Reagent	5 mL	RTU
Mounting Media	5 mL	RTU
Control Slide	1 slide (Optional)	FFPE
Datasheet	1 Copy	
Manual	1 Copy	

Storage Instructions

All the reagents are stored at 2-8°C. The kit is stable for 6 months from the date of receipt.

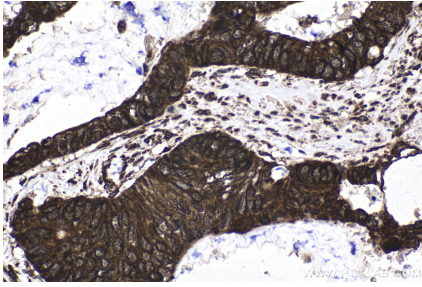
Background

EWS, also named as WSR1, belongs to the RRM TET family. It might normally function as a repressor. EWS-fusion-proteins (EFPS) may play a role in the tumorigenic process. They may disturb gene expression by mimicking, or interfering with the normal function of CTD-POLII within the transcription initiation complex. They may also contribute to an aberrant activation of the fusion protein target genes. Primary antibody in this kit is specific to EWS.

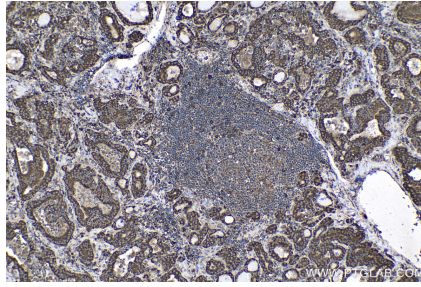
Synonyms

EWS, EWS oncogene, EWSR1, RNA binding protein EWS

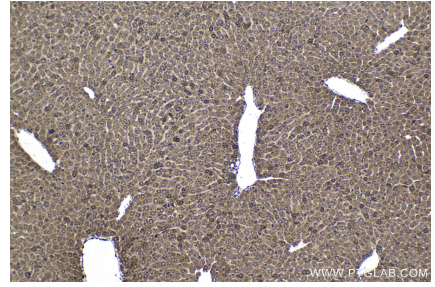
Selected Validation Data



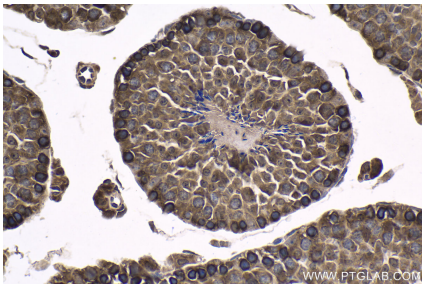
Immunohistochemical analysis of paraffin-embedded human urothelial carcinoma tissue slide using KHC1667 (EWSR1/EWS IHC Kit).



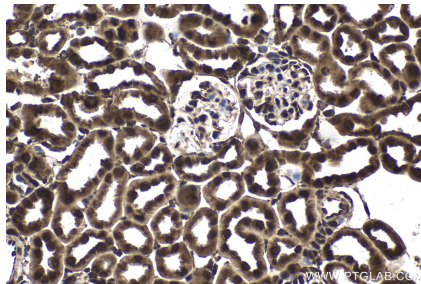
Immunohistochemical analysis of paraffin-embedded human thyroid cancer tissue slide using KHC1667 (EWSR1/EWS IHC Kit).



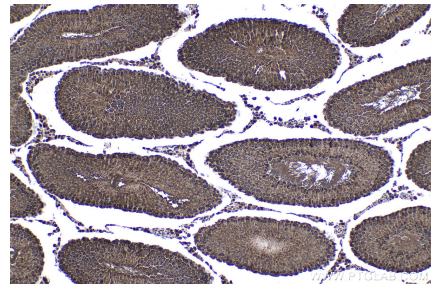
Immunohistochemical analysis of paraffin-embedded mouse liver tissue slide using KHC1667 (EWSR1/EWS IHC Kit).



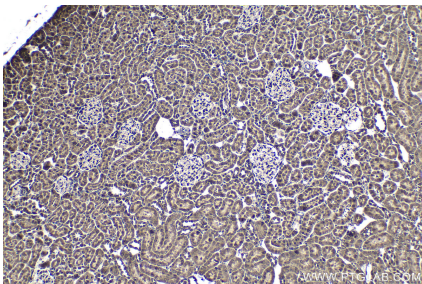
Immunohistochemical analysis of paraffin-embedded mouse testis tissue slide using KHC1667 (EWSR1/EWS IHC Kit).



Immunohistochemical analysis of paraffin-embedded mouse kidney tissue slide using KHC1667 (EWSR1/EWS IHC Kit).



Immunohistochemical analysis of paraffin-embedded rat testis tissue slide using KHC1667 (EWSR1/EWS IHC Kit).



Immunohistochemical analysis of paraffin-embedded rat kidney tissue slide using KHC1667 (EWSR1/EWS IHC Kit).