

IHC*easy* NFIX Ready-To-Use IHC Kit

Catalog Number: **KHC1741**

General Information

Sample type:
FFPE tissue
Cited sample type:
Reactivity:
Human, Mouse
Cited Reactivity:

Assay type:
Immunohistochemistry
Primary antibody type:
Mouse Monoclonal
Secondary antibody type:
Polymer-HRP-Goat anti-Mouse

Kit Component

Component	Size	Concentration
Antigen Retrieval Buffer	100 mL	50×
Washing Buffer	100 mL ×2	20×
Blocking Buffer	5 mL	RTU
Primary Antibody	5 mL	RTU
Secondary Antibody	5 mL	RTU
Chromogen Component A	0.2 mL	RTU
Chromogen Component B	4 mL	RTU
Signal Enhancer	5 mL	RTU
Counter Staining Reagent	5 mL	RTU
Mounting Media	5 mL	RTU
Control Slide	1 slide (Optional)	FFPE
Datasheet	1 Copy	
Manual	1 Copy	

Storage Instructions

All the reagents are stored at 2-8°C. The kit is stable for 6 months from the date of receipt.

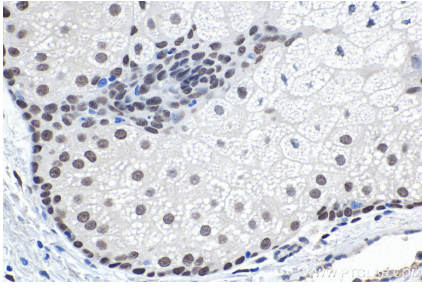
Background

NFIX, also named CTF, belongs to the CTF/NF-I family. NFIX recognizes and binds the palindromic sequence 5'-TTGGCNNNNNGCCAA-3' present in viral and cellular promoters and in the origin of replication of adenovirus type 2. NFIX is individually capable of activating transcription and replication.

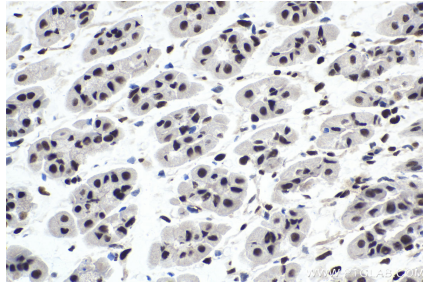
Synonyms

CTF, NF I/X, NF1 X, NF1A, NFI X, NFIX, Nuclear factor 1 X type, Nuclear factor 1/X, Nuclear factor I/X, TGGCA binding protein

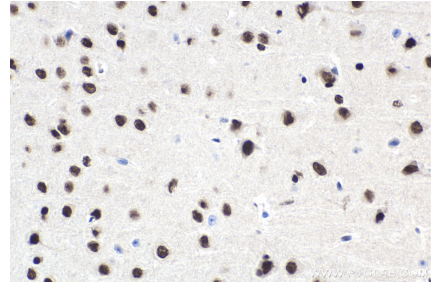
Selected Validation Data



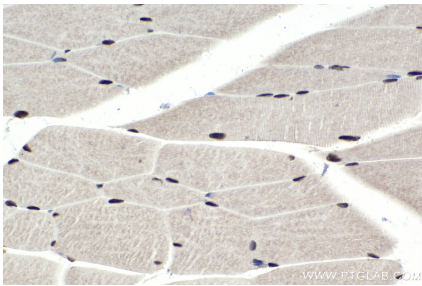
Immunohistochemical analysis of paraffin-embedded human skin cancer tissue slide using KHC1741 (NFIx IHC Kit).



Immunohistochemical analysis of paraffin-embedded mouse stomach tissue slide using KHC1741 (NFIx IHC Kit).



Immunohistochemical analysis of paraffin-embedded mouse brain tissue slide using KHC1741 (NFIx IHC Kit).



Immunohistochemical analysis of paraffin-embedded mouse skeletal muscle tissue slide using KHC1741 (NFIx IHC Kit).