

# IHC*easy* NFE2 Ready-To-Use IHC Kit

Catalog Number: **KHC1761**

## General Information

Sample type:  
FFPE tissue  
Cited sample type:  
Reactivity:  
Human, Mouse  
Cited Reactivity:

Assay type:  
Immunohistochemistry  
Primary antibody type:  
Rabbit Polyclonal  
Secondary antibody type:  
Polymer-HRP-Goat anti-Rabbit

## Kit Component

Component	Size	Concentration
Antigen Retrieval Buffer	100 mL	50×
Washing Buffer	100 mL ×2	20×
Blocking Buffer	5 mL	RTU
Primary Antibody	5 mL	RTU
Secondary Antibody	5 mL	RTU
Chromogen Component A	0.2 mL	RTU
Chromogen Component B	4 mL	RTU
Signal Enhancer	5 mL	RTU
Counter Staining Reagent	5 mL	RTU
Mounting Media	5 mL	RTU
Control Slide	1 slide (Optional)	FFPE
Datasheet	1 Copy	
Manual	1 Copy	

## Storage Instructions

All the reagents are stored at 2-8°C. The kit is stable for 6 months from the date of receipt.

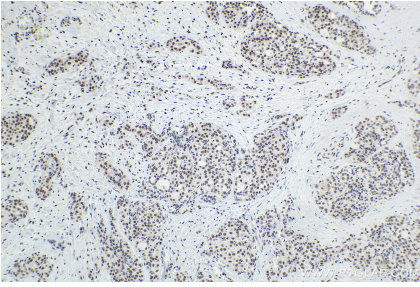
## Background

The transcription factor p45 nuclear factor-erythroid-derived 2(NFE2) is one component of the NF-E2 complex that essential for regulating erythroid and megakaryocytic maturation and differentiation. It also plays crucial roles in erythroid and megakaryocytic lineages. NFE2 recognizes the TCAT/C sequence of the AP-1-like core palindrome present in a number of erythroid and megakaryocytic gene promoters, and acts as an activator. And it may has a role in all aspects of hemoglobin production from globin and heme synthesis to procurement of iron.

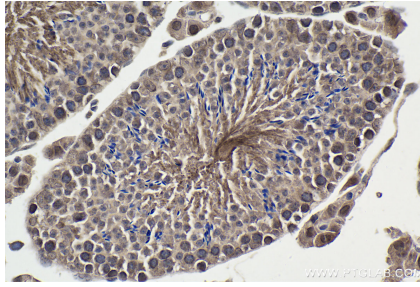
## Synonyms

Leucine zipper protein NF E2, NF E2, NFE2, p45, p45 NF E2

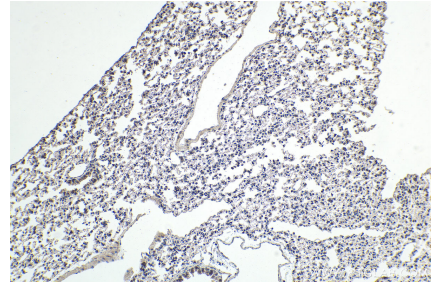
## Selected Validation Data



Immunohistochemical analysis of paraffin-embedded human thyroid cancer tissue slide using KHC1761 (NFE2 IHC Kit).



Immunohistochemical analysis of paraffin-embedded mouse testis tissue slide using KHC1761 (NFE2 IHC Kit).



Immunohistochemical analysis of paraffin-embedded mouse lung tissue slide using KHC1761 (NFE2 IHC Kit).