

IHC*easy* FOXP4 Ready-To-Use IHC Kit

Catalog Number: **KHC1818**

General Information

Sample type:
FFPE tissue

Cited sample type:

Reactivity:
Human, Mouse, Rat

Cited Reactivity:

Assay type:
Immunohistochemistry

Primary antibody type:
Rabbit Polyclonal

Secondary antibody type:
Polymer-HRP-Goat anti-Rabbit

Kit Component

Component	Size	Concentration
Antigen Retrieval Buffer	100 mL	50×
Washing Buffer	100 mL ×2	20×
Blocking Buffer	5 mL	RTU
Primary Antibody	5 mL	RTU
Secondary Antibody	5 mL	RTU
Chromogen Component A	0.2 mL	RTU
Chromogen Component B	4 mL	RTU
Signal Enhancer	5 mL	RTU
Counter Staining Reagent	5 mL	RTU
Mounting Media	5 mL	RTU
Control Slide	1 slide (Optional)	FFPE
Datasheet	1 Copy	
Manual	1 Copy	

Storage Instructions

All the reagents are stored at 2-8°C. The kit is stable for 6 months from the date of receipt.

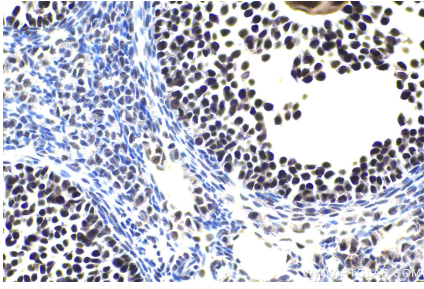
Background

FOXP4, also named as FKHLA, belongs to the FOX family. FOXP4 has been implicated in diverse biological processes in tumor initiation and progression. It has been demonstrated that FOXP4 is significantly upregulated in breast cancer, hepatocellular carcinoma and oral squamous cell carcinoma.

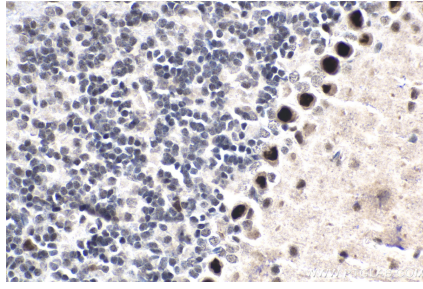
Synonyms

FKHLA, forkhead box P4, Forkhead box protein P4, FOXP4, hFKHLA

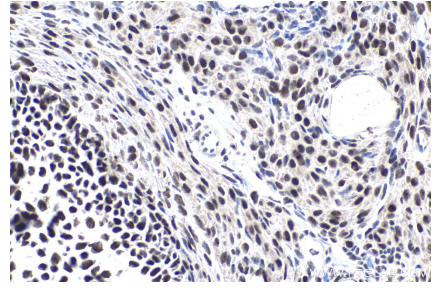
Selected Validation Data



Immunohistochemical analysis of paraffin-embedded mouse ovary tissue slide using KHC1818 (FOXP4 IHC Kit).



Immunohistochemical analysis of paraffin-embedded mouse cerebellum tissue slide using KHC1818 (FOXP4 IHC Kit).



Immunohistochemical analysis of paraffin-embedded rat ovary tissue slide using KHC1818 (FOXP4 IHC Kit).