

# IHCeasy<sup>®</sup> ZMIZ1 Ready-To-Use IHC Kit

Catalog Number: **KHC1997**

## General Information

Sample type:  
FFPE tissue  
Cited sample type:  
Reactivity:  
Human, Mouse, Rat  
Cited Reactivity:

Assay type:  
Immunohistochemistry  
Primary antibody type:  
Rabbit Polyclonal  
Secondary antibody type:  
Polymer-HRP-Goat anti-Rabbit

## Kit Component

Component	Size	Concentration
Antigen Retrieval Buffer	100 mL	50×
Washing Buffer	100 mL ×2	20×
Blocking Buffer	5 mL	RTU
Primary Antibody	5 mL	RTU
Secondary Antibody	5 mL	RTU
Chromogen Component A	0.2 mL	RTU
Chromogen Component B	4 mL	RTU
Signal Enhancer	5 mL	RTU
Counter Staining Reagent	5 mL	RTU
Mounting Media	5 mL	RTU
Control Slide	1 slide (Optional)	FFPE
Datasheet	1 Copy	
Manual	1 Copy	

## Storage Instructions

All the reagents are stored at 2-8°C. The kit is stable for 6 months from the date of receipt.

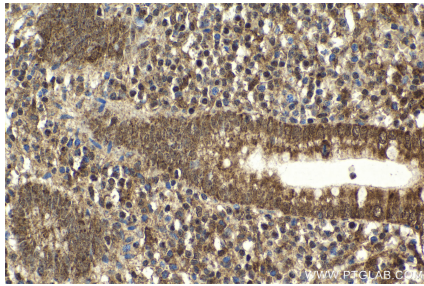
## Background

ZMIZ2 and ZMIZ1 members of a PIAS-like family of proteins that interact with nuclear hormone receptors. Primary antibody in this kit is specific for ZMIZ1.

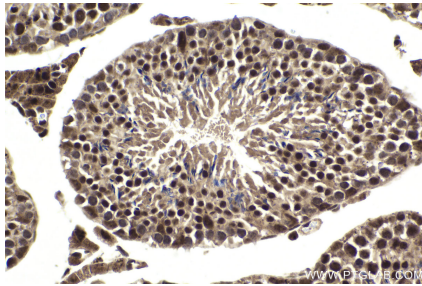
## Synonyms

hZIMP10, KIAA1224, MIZ, PIAS like protein Zimp10, RAI17, Zimp10, ZMIZ1, ZMIZ1-Specific

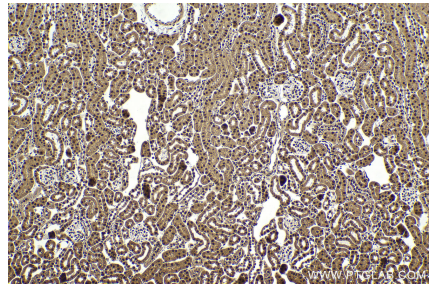
## Selected Validation Data



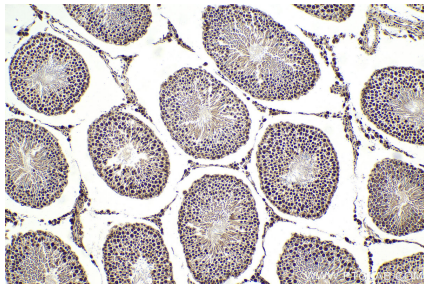
Immunohistochemical analysis of paraffin-embedded human appendicitis tissue slide using KHC1997 (ZMIZ1 IHC Kit).



Immunohistochemical analysis of paraffin-embedded mouse testis tissue slide using KHC1997 (ZMIZ1 IHC Kit).



Immunohistochemical analysis of paraffin-embedded mouse kidney tissue slide using KHC1997 (ZMIZ1 IHC Kit).



Immunohistochemical analysis of paraffin-embedded rat testis tissue slide using KHC1997 (ZMIZ1 IHC Kit).