

# IHC*easy* HIF3A Ready-To-Use IHC Kit

Catalog Number: **KHC2016**

## General Information

Sample type:  
FFPE tissue  
Cited sample type:  
Reactivity:  
Human, Mouse  
Cited Reactivity:

Assay type:  
Immunohistochemistry  
Primary antibody type:  
Rabbit Polyclonal  
Secondary antibody type:  
Polymer-HRP-Goat anti-Rabbit

## Kit Component

Component	Size	Concentration
Antigen Retrieval Buffer	100 mL	50×
Washing Buffer	100 mL ×2	20×
Blocking Buffer	5 mL	RTU
Primary Antibody	5 mL	RTU
Secondary Antibody	5 mL	RTU
Chromogen Component A	0.2 mL	RTU
Chromogen Component B	4 mL	RTU
Signal Enhancer	5 mL	RTU
Counter Staining Reagent	5 mL	RTU
Mounting Media	5 mL	RTU
Control Slide	1 slide (Optional)	FFPE
Datasheet	1 Copy	
Manual	1 Copy	

## Storage Instructions

All the reagents are stored at 2-8°C. The kit is stable for 6 months from the date of receipt.

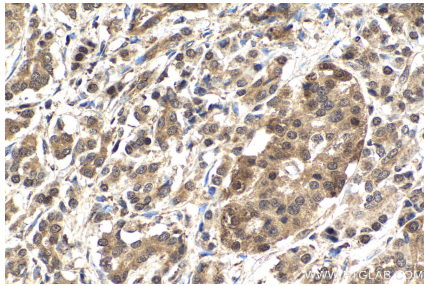
## Background

HIF3A, Hypoxia-inducible factor 3-alpha, acts as a transcriptional regulator in adaptive response to low oxygen tension. It functions as an inhibitor of angiogenesis in hypoxic cells of the cornea. HIF3A also plays a role in the development of the cardiorespiratory system. HIF3A was up-regulated by hypoxia. Multiple alternatively spliced transcript variants have been found.

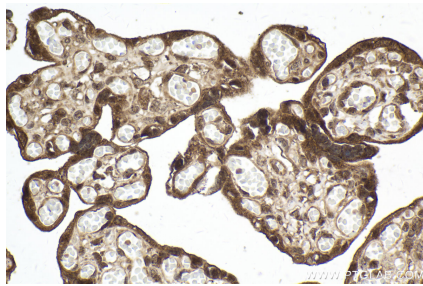
## Synonyms

bHLHe17, HIF 3 alpha, HIF 3A, HIF 3A2, HIF 3A4, HIF3 alpha, HIF3 alpha 1, HIF3A, Inhibitory PAS domain protein, IPAS, Member of PAS protein 7, MOP7, PASD7

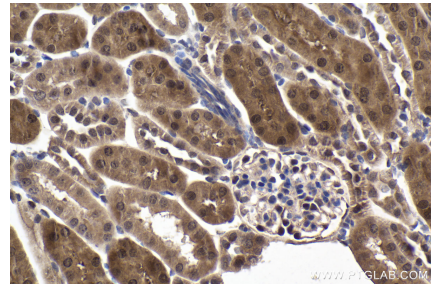
## Selected Validation Data



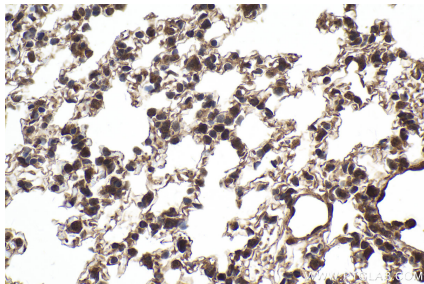
Immunohistochemical analysis of paraffin-embedded human pancreas cancer tissue slide using KHC2016 (HIF3A IHC Kit).



Immunohistochemical analysis of paraffin-embedded human placenta tissue slide using KHC2016 (HIF3A IHC Kit).



Immunohistochemical analysis of paraffin-embedded mouse kidney tissue slide using KHC2016 (HIF3A IHC Kit).



Immunohistochemical analysis of paraffin-embedded mouse lung tissue slide using KHC2016 (HIF3A IHC Kit).