

IHC*easy* HDDC2 Ready-To-Use IHC Kit

Catalog Number: **KHC2036**

General Information

Sample type:
FFPE tissue
Cited sample type:
Reactivity:
Human, Mouse, Rat
Cited Reactivity:

Assay type:
Immunohistochemistry
Primary antibody type:
Mouse Monoclonal
Secondary antibody type:
Polymer-HRP-Goat anti-Mouse

Kit Component

Component	Size	Concentration
Antigen Retrieval Buffer	100 mL	50×
Washing Buffer	100 mL ×2	20×
Blocking Buffer	5 mL	RTU
Primary Antibody	5 mL	RTU
Secondary Antibody	5 mL	RTU
Chromogen Component A	0.2 mL	RTU
Chromogen Component B	4 mL	RTU
Signal Enhancer	5 mL	RTU
Counter Staining Reagent	5 mL	RTU
Mounting Media	5 mL	RTU
Control Slide	1 slide (Optional)	FFPE
Datasheet	1 Copy	
Manual	1 Copy	

Storage Instructions

All the reagents are stored at 2-8°C. The kit is stable for 6 months from the date of receipt.

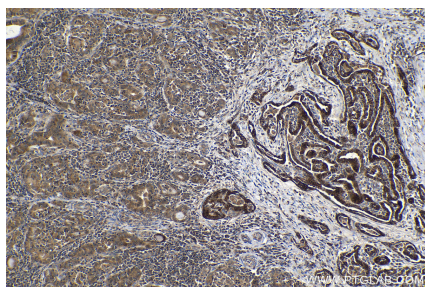
Background

HDDC2, also named as C6orf74, plays a role in the maintenance of pluripotency in human ES and iPS cells. HDDC2 is a nuclear - encoded but mitochondrially localized protein. It has been reported as associated with oxidative metabolism.

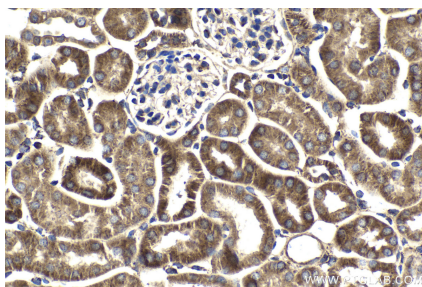
Synonyms

HCV NS5A-transactivated protein 2, EC:3.1.3.89, CGI-130, CGI 130, C6orf74

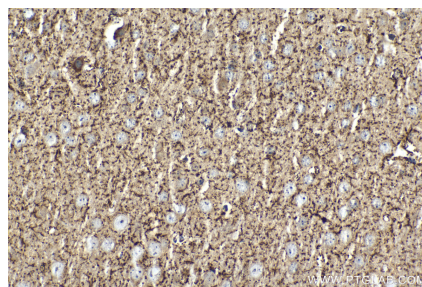
Selected Validation Data



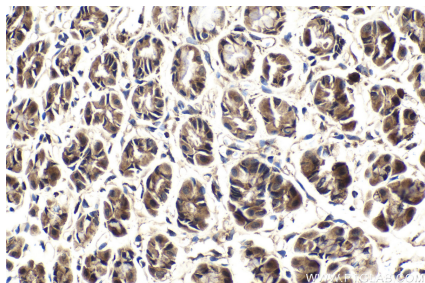
Immunohistochemical analysis of paraffin-embedded human thyroid cancer tissue slide using KHC2036 (HDDC2 IHC Kit).



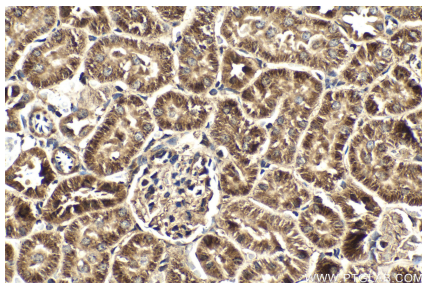
Immunohistochemical analysis of paraffin-embedded mouse kidney tissue slide using KHC2036 (HDDC2 IHC Kit).



Immunohistochemical analysis of paraffin-embedded mouse brain tissue slide using KHC2036 (HDDC2 IHC Kit).



Immunohistochemical analysis of paraffin-embedded rat stomach tissue slide using KHC2036 (HDDC2 IHC Kit).



Immunohistochemical analysis of paraffin-embedded rat kidney tissue slide using KHC2036 (HDDC2 IHC Kit).