

IHC*easy* PSMD3 Ready-To-Use IHC Kit

Catalog Number: **KHC2075**

General Information

Sample type:
FFPE tissue

Cited sample type:

Reactivity:
Human, Mouse, Rat

Cited Reactivity:

Assay type:
Immunohistochemistry

Primary antibody type:
Rabbit Polyclonal

Secondary antibody type:
Polymer-HRP-Goat anti-Rabbit

Kit Component

Component	Size	Concentration
Antigen Retrieval Buffer	100 mL	50×
Washing Buffer	100 mL ×2	20×
Blocking Buffer	5 mL	RTU
Primary Antibody	5 mL	RTU
Secondary Antibody	5 mL	RTU
Chromogen Component A	0.2 mL	RTU
Chromogen Component B	4 mL	RTU
Signal Enhancer	5 mL	RTU
Counter Staining Reagent	5 mL	RTU
Mounting Media	5 mL	RTU
Control Slide	1 slide (Optional)	FFPE
Datasheet	1 Copy	
Manual	1 Copy	

Storage Instructions

All the reagents are stored at 2-8°C. The kit is stable for 6 months from the date of receipt.

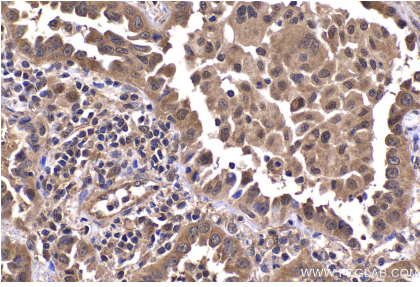
Background

PSMD3, encoding proteasome (prosome, macropain) 26S subunit, non-ATPase 3, a member of the 26S proteasome family. PSMD3 is expressed in most of the tissues according to the RNA-Seq database. It has been reported that PSMD3 genotypes are associated with white blood cell (WBC) and neutrophil counts and have interactions with dietary fatty acids and carbohydrates on glucose-related traits.

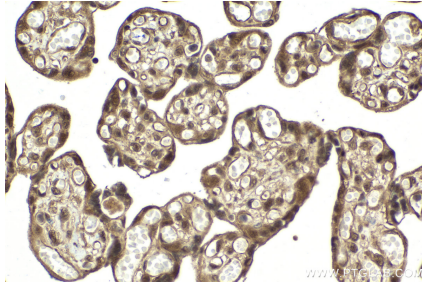
Synonyms

TSTA2, S3, RPN3, P58, 26S proteasome non-ATPase regulatory subunit 3

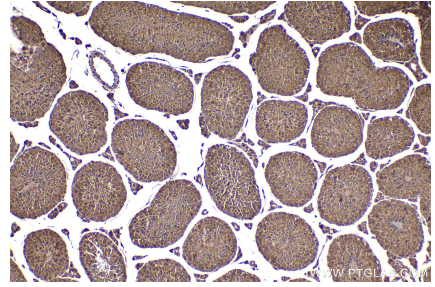
Selected Validation Data



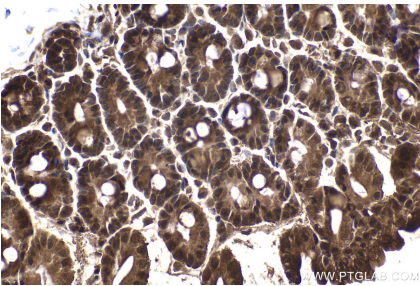
Immunohistochemical analysis of paraffin-embedded human lung cancer tissue slide using KHC2075 (PSMD3 IHC Kit).



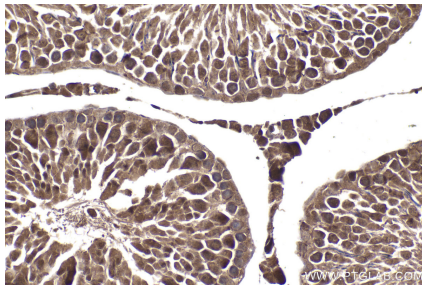
Immunohistochemical analysis of paraffin-embedded human placenta tissue slide using KHC2075 (PSMD3 IHC Kit).



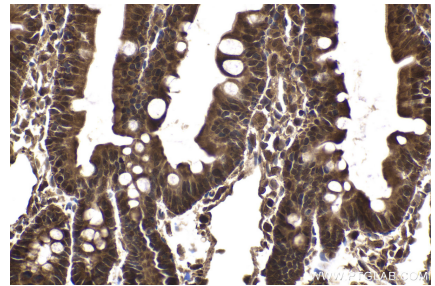
Immunohistochemical analysis of paraffin-embedded mouse testis tissue slide using KHC2075 (PSMD3 IHC Kit).



Immunohistochemical analysis of paraffin-embedded mouse intestine tissue slide using KHC2075 (PSMD3 IHC Kit).



Immunohistochemical analysis of paraffin-embedded rat testis tissue slide using KHC2075 (PSMD3 IHC Kit).



Immunohistochemical analysis of paraffin-embedded rat small intestine tissue slide using KHC2075 (PSMD3 IHC Kit).