

IHC*easy* CA12 Ready-To-Use IHC Kit

Catalog Number: **KHC2088**

General Information

Sample type:
FFPE tissue
Cited sample type:
Reactivity:
Human, Mouse
Cited Reactivity:

Assay type:
Immunohistochemistry
Primary antibody type:
Rabbit Polyclonal
Secondary antibody type:
Polymer-HRP-Goat anti-Rabbit

Kit Component

Component	Size	Concentration
Antigen Retrieval Buffer	100 mL	50×
Washing Buffer	100 mL ×2	20×
Blocking Buffer	5 mL	RTU
Primary Antibody	5 mL	RTU
Secondary Antibody	5 mL	RTU
Chromogen Component A	0.2 mL	RTU
Chromogen Component B	4 mL	RTU
Signal Enhancer	5 mL	RTU
Counter Staining Reagent	5 mL	RTU
Mounting Media	5 mL	RTU
Control Slide	1 slide (Optional)	FFPE
Datasheet	1 Copy	
Manual	1 Copy	

Storage Instructions

All the reagents are stored at 2-8°C. The kit is stable for 6 months from the date of receipt.

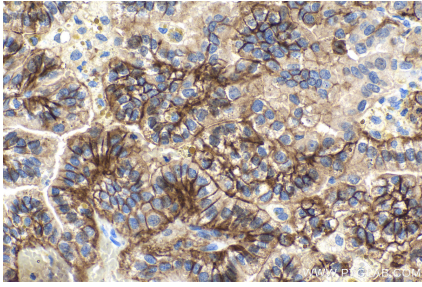
Background

CA12 belongs to the alpha-carbonic anhydrase family. It reversible hydration of carbon dioxide. Overexpression of the zinc enzyme CA12 is observed in certain human cancers. The structure reveals a prototypical CA fold; however, two CA12 domains associate to form an isologous dimer, an observation that is confirmed by studies of the enzyme in solution.

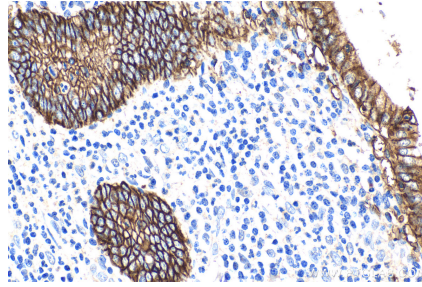
Synonyms

CA-XII, CAXII, carbonic anhydrase XII, Carbonic anhydrase 12, Carbonate dehydratase XII

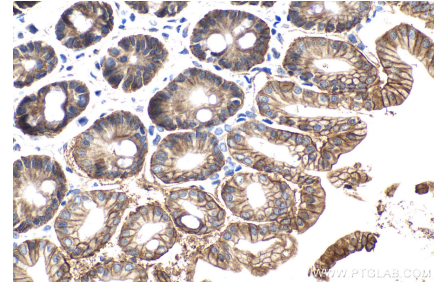
Selected Validation Data



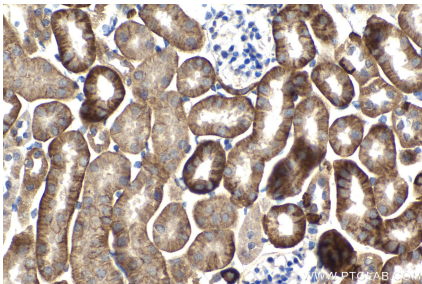
Immunohistochemical analysis of paraffin-embedded human renal cell carcinoma tissue slide using KHC2088 (CA12 IHC Kit).



Immunohistochemical analysis of paraffin-embedded human appendicitis tissue slide using KHC2088 (CA12 IHC Kit).



Immunohistochemical analysis of paraffin-embedded mouse intestine tissue slide using KHC2088 (CA12 IHC Kit).



Immunohistochemical analysis of paraffin-embedded mouse kidney tissue slide using KHC2088 (CA12 IHC Kit).