

IHC*easy* GDF9 Ready-To-Use IHC Kit

Catalog Number: **KHC2096**

General Information

Sample type:
FFPE tissue

Cited sample type:

Reactivity:
Human, Mouse, Rat

Cited Reactivity:

Assay type:
Immunohistochemistry

Primary antibody type:
Rabbit Polyclonal

Secondary antibody type:
Polymer-HRP-Goat anti-Rabbit

Kit Component

Component	Size	Concentration
Antigen Retrieval Buffer	100 mL	50×
Washing Buffer	100 mL × 2	20×
Blocking Buffer	5 mL	RTU
Primary Antibody	5 mL	RTU
Secondary Antibody	5 mL	RTU
Chromogen Component A	0.2 mL	RTU
Chromogen Component B	4 mL	RTU
Signal Enhancer	5 mL	RTU
Counter Staining Reagent	5 mL	RTU
Mounting Media	5 mL	RTU
Control Slide	1 slide (Optional)	FFPE
Datasheet	1 Copy	
Manual	1 Copy	

Storage Instructions

All the reagents are stored at 2-8°C. The kit is stable for 6 months from the date of receipt.

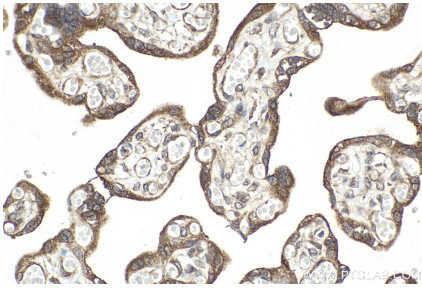
Background

GDF9 (Growth/differentiation factor 9) belongs to the TGF-beta family. GDF9 is required for ovarian folliculogenesis. GDF9 and BMP15 are oocyte-secreted factors with a leading role in the control of ovarian function in female reproduction, modulating both the cell fate of the somatic granulosa cells and the quality and developmental competence of the egg. GDF9 promotes cell transition from G0/G1 to S and G2/M phases, through an increase of CCND1 and CCNE1 expression, and RB1 phosphorylation. It regulates STAR expression and cAMP-dependent progesterone release in granulosa and thecal cells. GDF9 attenuates the suppressive effects of activin A on STAR expression and progesterone production by increasing the expression of inhibin B. It suppresses FST and FSTL3 production in granulosa-lutein cells.

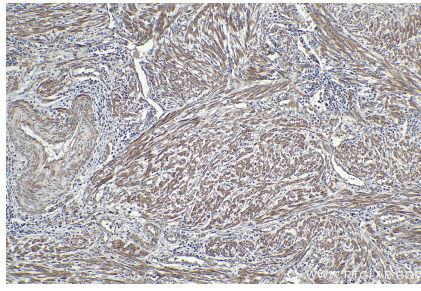
Synonyms

GDF 9, GDF9

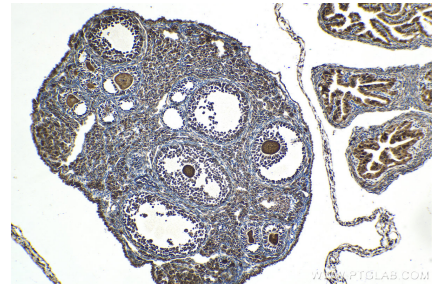
Selected Validation Data



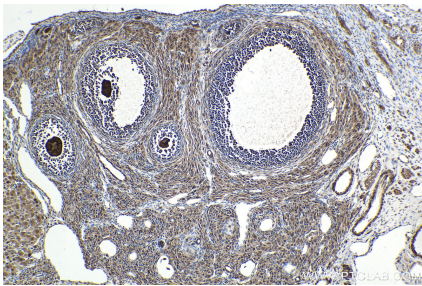
Immunohistochemical analysis of paraffin-embedded human placenta tissue slide using KHC2096 (GDF9 IHC Kit).



Immunohistochemical analysis of paraffin-embedded human endometrial cancer tissue slide using KHC2096 (GDF9 IHC Kit).



Immunohistochemical analysis of paraffin-embedded mouse ovary tissue slide using KHC2096 (GDF9 IHC Kit).



Immunohistochemical analysis of paraffin-embedded rat ovary tissue slide using KHC2096 (GDF9 IHC Kit).