

IHC*easy* MYCBP2 Ready-To-Use IHC Kit

Catalog Number: **KHC2116**

General Information

Sample type:
FFPE tissue

Cited sample type:

Reactivity:
Human, Mouse, Rat

Cited Reactivity:

Assay type:
Immunohistochemistry

Primary antibody type:
Rabbit Polyclonal

Secondary antibody type:
Polymer-HRP-Goat anti-Rabbit

Kit Component

Component	Size	Concentration
Antigen Retrieval Buffer	100 mL	50×
Washing Buffer	100 mL ×2	20×
Blocking Buffer	5 mL	RTU
Primary Antibody	5 mL	RTU
Secondary Antibody	5 mL	RTU
Chromogen Component A	0.2 mL	RTU
Chromogen Component B	4 mL	RTU
Signal Enhancer	5 mL	RTU
Counter Staining Reagent	5 mL	RTU
Mounting Media	5 mL	RTU
Control Slide	1 slide (Optional)	FFPE
Datasheet	1 Copy	
Manual	1 Copy	

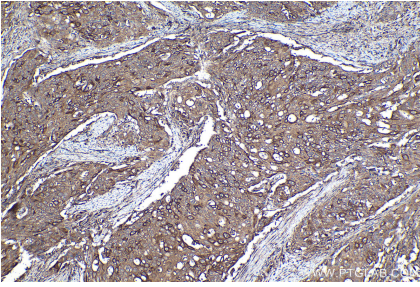
Storage Instructions

All the reagents are stored at 2-8°C. The kit is stable for 6 months from the date of receipt.

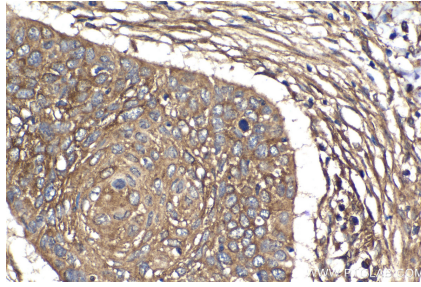
Synonyms

DKFZp686M08244, FLJ10106, FLJ13826, FLJ21597, FLJ21646, KIAA0916, MYC binding protein 2, MYCBP2, PAM, Pam/highwire/rpm 1 protein, Protein associated with Myc

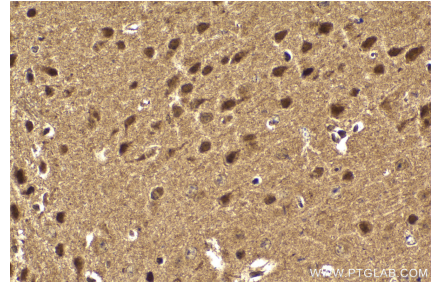
Selected Validation Data



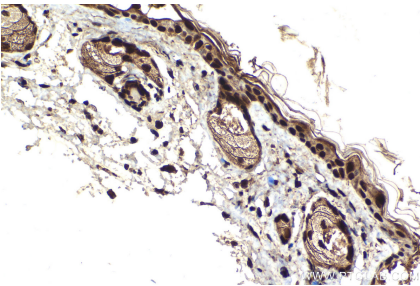
Immunohistochemical analysis of paraffin-embedded human cervical cancer tissue slide using KHC2116 (MYCBP2 IHC Kit).



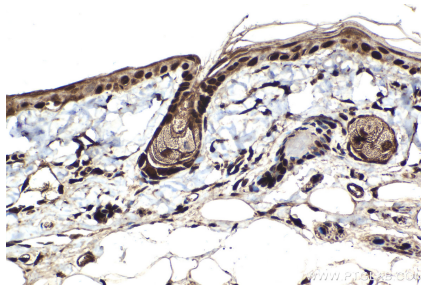
Immunohistochemical analysis of paraffin-embedded human oesophagus cancer tissue slide using KHC2116 (MYCBP2 IHC Kit).



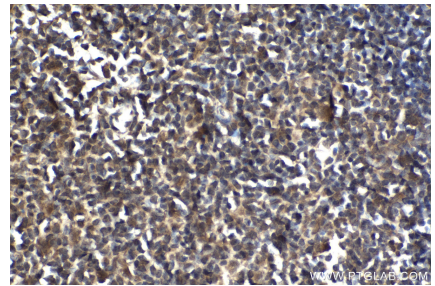
Immunohistochemical analysis of paraffin-embedded mouse brain tissue slide using KHC2116 (MYCBP2 IHC Kit).



Immunohistochemical analysis of paraffin-embedded mouse skin tissue slide using KHC2116 (MYCBP2 IHC Kit).



Immunohistochemical analysis of paraffin-embedded rat skin tissue slide using KHC2116 (MYCBP2 IHC Kit).



Immunohistochemical analysis of paraffin-embedded rat thymus tissue slide using KHC2116 (MYCBP2 IHC Kit).