

# IHC*easy* ERAL1 Ready-To-Use IHC Kit

Catalog Number: **KHC2117**

## General Information

Sample type:  
FFPE tissue  
Cited sample type:  
Reactivity:  
Human, Mouse  
Cited Reactivity:

Assay type:  
Immunohistochemistry  
Primary antibody type:  
Rabbit Polyclonal  
Secondary antibody type:  
Polymer-HRP-Goat anti-Rabbit

## Kit Component

| Component                | Size               | Concentration |
|--------------------------|--------------------|---------------|
| Antigen Retrieval Buffer | 100 mL             | 50×           |
| Washing Buffer           | 100 mL ×2          | 20×           |
| Blocking Buffer          | 5 mL               | RTU           |
| Primary Antibody         | 5 mL               | RTU           |
| Secondary Antibody       | 5 mL               | RTU           |
| Chromogen Component A    | 0.2 mL             | RTU           |
| Chromogen Component B    | 4 mL               | RTU           |
| Signal Enhancer          | 5 mL               | RTU           |
| Counter Staining Reagent | 5 mL               | RTU           |
| Mounting Media           | 5 mL               | RTU           |
| Control Slide            | 1 slide (Optional) | FFPE          |
| Datasheet                | 1 Copy             |               |
| Manual                   | 1 Copy             |               |

## Storage Instructions

All the reagents are stored at 2-8°C. The kit is stable for 6 months from the date of receipt.

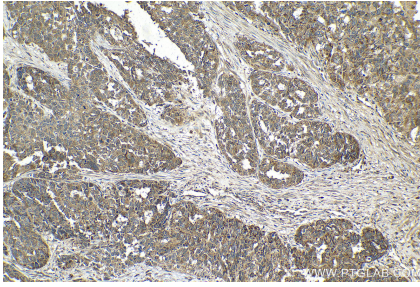
## Background

ERAL1, a homologue of Era protein in Escherichia coli, is a member of conserved GTP-binding proteins with RNA-binding activity. ERAL1 localizes to the mitochondrion/ribosomal subunit, and binds to the 3' terminal stem loop of 12S mitochondrial rRNA and is required for proper assembly of the 28S small mitochondrial ribosomal subunit. Deletion of ERAL1 has been shown to cause mitochondrial dysfunction, growth retardation, and apoptosis.

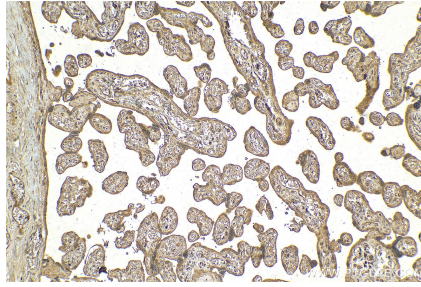
## Synonyms

HERA, ERAL1A, ERA W, ERA, Conserved ERA-like GTPase

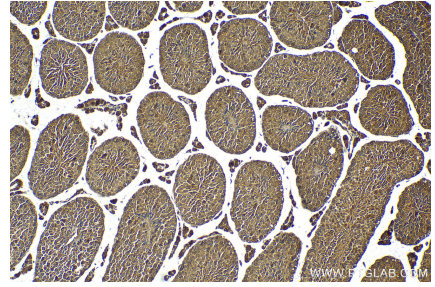
## Selected Validation Data



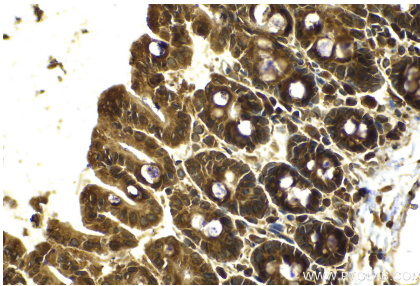
Immunohistochemical analysis of paraffin-embedded human ovary cancer tissue slide using KHC2117 (ERAL1 IHC Kit).



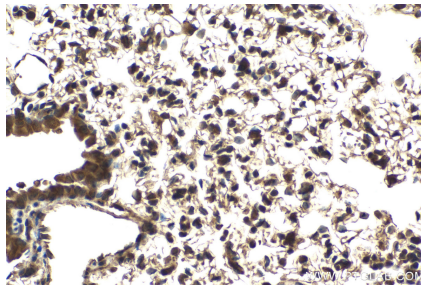
Immunohistochemical analysis of paraffin-embedded human placenta tissue slide using KHC2117 (ERAL1 IHC Kit).



Immunohistochemical analysis of paraffin-embedded mouse testis tissue slide using KHC2117 (ERAL1 IHC Kit).



Immunohistochemical analysis of paraffin-embedded mouse intestine tissue slide using KHC2117 (ERAL1 IHC Kit).



Immunohistochemical analysis of paraffin-embedded mouse lung tissue slide using KHC2117 (ERAL1 IHC Kit).