

IHC*easy* PPP1R15A/GADD34 Ready-To-Use IHC Kit

Catalog Number: **KHC2121**

General Information

Sample type:
FFPE tissue

Cited sample type:

Reactivity:
Human, Mouse

Cited Reactivity:

Assay type:
Immunohistochemistry

Primary antibody type:
Rabbit Polyclonal

Secondary antibody type:
Polymer-HRP-Goat anti-Rabbit

Kit Component

| Component | Size | Concentration |
|--------------------------|--------------------|---------------|
| Antigen Retrieval Buffer | 100 mL | 50× |
| Washing Buffer | 100 mL ×2 | 20× |
| Blocking Buffer | 5 mL | RTU |
| Primary Antibody | 5 mL | RTU |
| Secondary Antibody | 5 mL | RTU |
| Chromogen Component A | 0.2 mL | RTU |
| Chromogen Component B | 4 mL | RTU |
| Signal Enhancer | 5 mL | RTU |
| Counter Staining Reagent | 5 mL | RTU |
| Mounting Media | 5 mL | RTU |
| Control Slide | 1 slide (Optional) | FFPE |
| Datasheet | 1 Copy | |
| Manual | 1 Copy | |

Storage Instructions

All the reagents are stored at 2-8°C. The kit is stable for 6 months from the date of receipt.

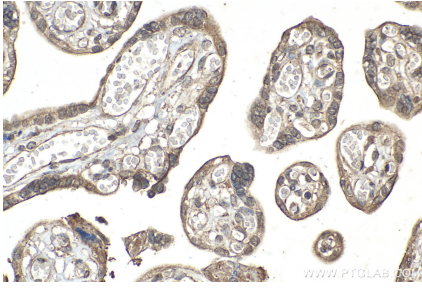
Background

GADD34, also named PPP1R15A, belongs to the PPP1R15 family. GADD34 can be triggered as a direct target of activating transcription factor4 (ATF4) under ER stress, it plays a pivotal role in the recovery of cells from shut-down of translation induced by ER stress. It recruits the serine/threonine-protein phosphatase (PP1) to dephosphorylate the translation initiation factor eIF2alpha, thereby reversing the shut-off of protein synthesis initiated by stress-inducible kinases and facilitating recovery of cells from stress. GADD34 down-regulates the TGF-beta signaling pathway by promoting dephosphorylation of TGFβ1 via PP1. It may also promote apoptosis by inducing TP53 phosphorylation on 'Ser-15'. Starvation-induced expression of GADD34 reduced mTOR activity and induced autophagy in wild-type mice, but not in GADD34 KO mice.

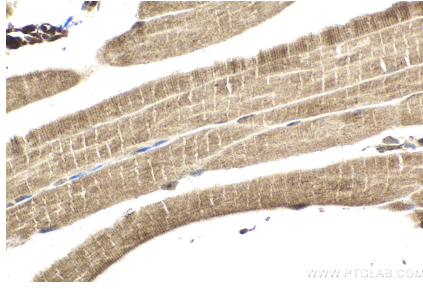
Synonyms

GADD34, growth arrest and DNA damage-inducible protein 34, PPP1R15A

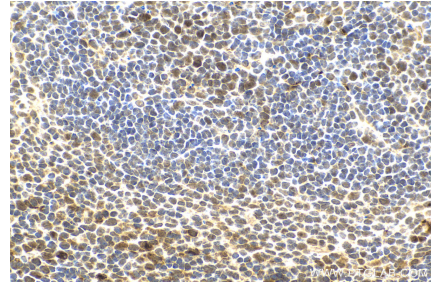
Selected Validation Data



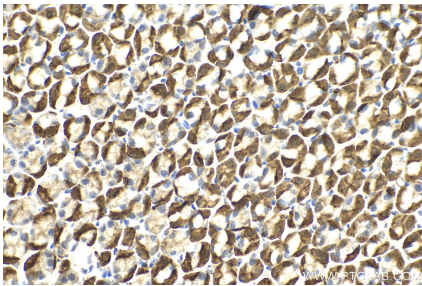
Immunohistochemical analysis of paraffin-embedded human placenta tissue slide using KHC2121 (PPP1R15A/GADD34 IHC Kit).



Immunohistochemical analysis of paraffin-embedded mouse skeletal muscle tissue slide using KHC2121 (PPP1R15A/GADD34 IHC Kit).



Immunohistochemical analysis of paraffin-embedded mouse spleen tissue slide using KHC2121 (PPP1R15A/GADD34 IHC Kit).



Immunohistochemical analysis of paraffin-embedded mouse stomach tissue slide using KHC2121 (PPP1R15A/GADD34 IHC Kit).