

IHC*easy* FAM107A Ready-To-Use IHC Kit

Catalog Number: **KHC2151**

General Information

Sample type:
FFPE tissue

Cited sample type:

Reactivity:
Human, Mouse, Rat

Cited Reactivity:

Assay type:
Immunohistochemistry

Primary antibody type:
Rabbit Polyclonal

Secondary antibody type:
Polymer-HRP-Goat anti-Rabbit

Kit Component

Component	Size	Concentration
Antigen Retrieval Buffer	100 mL	50×
Washing Buffer	100 mL ×2	20×
Blocking Buffer	5 mL	RTU
Primary Antibody	5 mL	RTU
Secondary Antibody	5 mL	RTU
Chromogen Component A	0.2 mL	RTU
Chromogen Component B	4 mL	RTU
Signal Enhancer	5 mL	RTU
Counter Staining Reagent	5 mL	RTU
Mounting Media	5 mL	RTU
Control Slide	1 slide (Optional)	FFPE
Datasheet	1 Copy	
Manual	1 Copy	

Storage Instructions

All the reagents are stored at 2-8°C. The kit is stable for 6 months from the date of receipt.

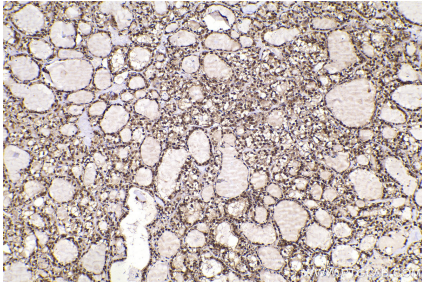
Background

FAM107A, also named as TU3A, encodes a 144 amino-acid protein, which contains a coiled-coil domain and a nuclear localization signal. FAM107A as a transcription factor regulates some gene transcription and signal transduction in cell. With the exception of peripheral blood cells, FAM107A is widely expressed in normal tissues, but shows significant loss of expression in renal cell carcinomas and frequent loss of expression in cervical, gastric, ovarian and non small cell lung cancers. Transfection of FAM107A mRNA into cancer cell line inhibits cell growth and proliferation, supporting the evidence that the gene functions as an important tumor suppressor.

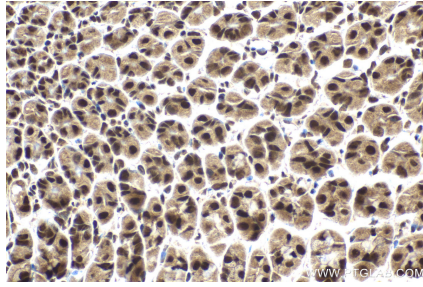
Synonyms

DRR1, FAM107A, Protein FAM107A, Protein TU3A, TU3A

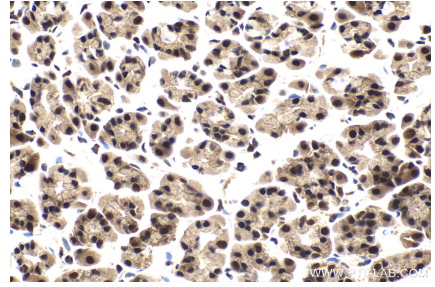
Selected Validation Data



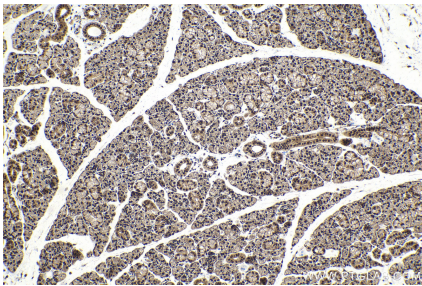
Immunohistochemical analysis of paraffin-embedded human thyroid cancer tissue slide using KHC2151 (FAM107A IHC Kit).



Immunohistochemical analysis of paraffin-embedded mouse stomach tissue slide using KHC2151 (FAM107A IHC Kit).



Immunohistochemical analysis of paraffin-embedded rat stomach tissue slide using KHC2151 (FAM107A IHC Kit).



Immunohistochemical analysis of paraffin-embedded rat salivary gland tissue slide using KHC2151 (FAM107A IHC Kit).