

# IHC*easy* PTTG1/Securin Ready-To-Use IHC Kit

Catalog Number: **KHC2152**

## General Information

**Sample type:**  
FFPE tissue

**Cited sample type:**

**Reactivity:**  
Human, Mouse, Rat

**Cited Reactivity:**

**Assay type:**  
Immunohistochemistry

**Primary antibody type:**  
Rabbit Polyclonal

**Secondary antibody type:**  
Polymer-HRP-Goat anti-Rabbit

## Kit Component

Component	Size	Concentration
Antigen Retrieval Buffer	100 mL	50×
Washing Buffer	100 mL ×2	20×
Blocking Buffer	5 mL	RTU
Primary Antibody	5 mL	RTU
Secondary Antibody	5 mL	RTU
Chromogen Component A	0.2 mL	RTU
Chromogen Component B	4 mL	RTU
Signal Enhancer	5 mL	RTU
Counter Staining Reagent	5 mL	RTU
Mounting Media	5 mL	RTU
Control Slide	1 slide (Optional)	FFPE
Datasheet	1 Copy	
Manual	1 Copy	

## Storage Instructions

All the reagents are stored at 2-8°C. The kit is stable for 6 months from the date of receipt.

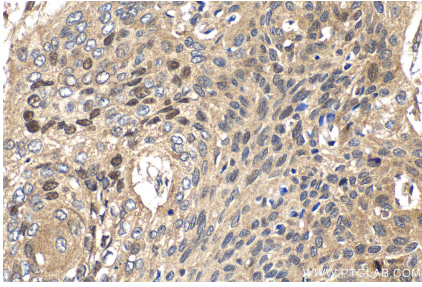
## Background

Securin, also known as the pituitary tumor transforming gene (PTTG1), was first isolated from rat pituitary tumor cells. Securin is a multi-functional protein that regulates sister chromatid segregation in mitosis, DNA repair, gene transcription, metabolism, and organ development. Securin is normally expressed in tissues with high proliferative activity, including the spleen, thymus gland, and testis, whereas it is rarely expressed in differentiated mature tissues.

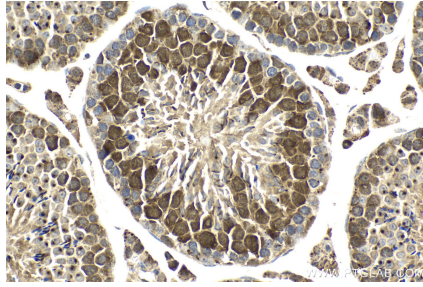
## Synonyms

PTTG1, Securin, PTTG, Pituitary tumor-transforming gene 1 protein, hPTTG

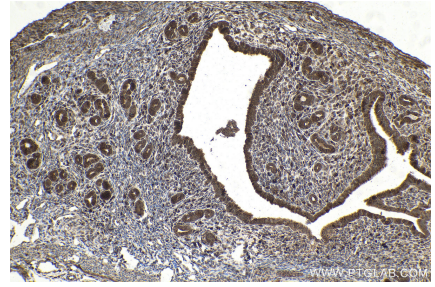
## Selected Validation Data



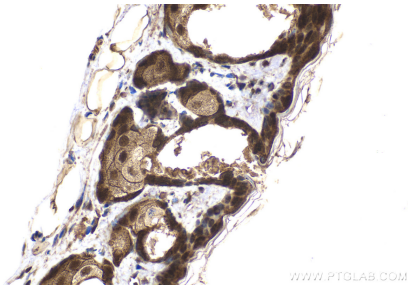
Immunohistochemical analysis of paraffin-embedded human oesophagus cancer tissue slide using KHC2152 (PTTG1/Securin IHC Kit).



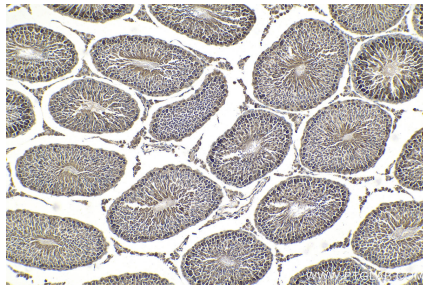
Immunohistochemical analysis of paraffin-embedded mouse testis tissue slide using KHC2152 (PTTG1/Securin IHC Kit).



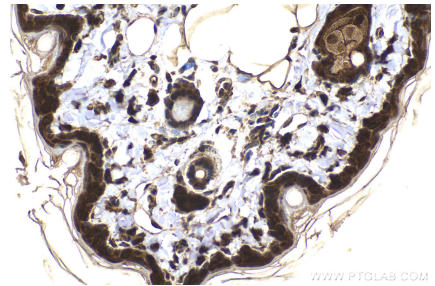
Immunohistochemical analysis of paraffin-embedded mouse cervix tissue slide using KHC2152 (PTTG1/Securin IHC Kit).



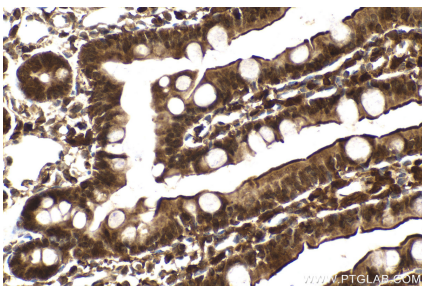
Immunohistochemical analysis of paraffin-embedded mouse skin tissue slide using KHC2152 (PTTG1/Securin IHC Kit).



Immunohistochemical analysis of paraffin-embedded rat testis tissue slide using KHC2152 (PTTG1/Securin IHC Kit).



Immunohistochemical analysis of paraffin-embedded rat skin tissue slide using KHC2152 (PTTG1/Securin IHC Kit).



Immunohistochemical analysis of paraffin-embedded rat small intestine tissue slide using KHC2152 (PTTG1/Securin IHC Kit).