

IHC*easy* HRAS Ready-To-Use IHC Kit

Catalog Number: **KHC2155**

General Information

Sample type:
FFPE tissue
Cited sample type:
Reactivity:
Human, Mouse, Rat
Cited Reactivity:

Assay type:
Immunohistochemistry
Primary antibody type:
Rabbit Polyclonal
Secondary antibody type:
Polymer-HRP-Goat anti-Rabbit

Kit Component

Component	Size	Concentration
Antigen Retrieval Buffer	100 mL	50×
Washing Buffer	100 mL ×2	20×
Blocking Buffer	5 mL	RTU
Primary Antibody	5 mL	RTU
Secondary Antibody	5 mL	RTU
Chromogen Component A	0.2 mL	RTU
Chromogen Component B	4 mL	RTU
Signal Enhancer	5 mL	RTU
Counter Staining Reagent	5 mL	RTU
Mounting Media	5 mL	RTU
Control Slide	1 slide (Optional)	FFPE
Datasheet	1 Copy	
Manual	1 Copy	

Storage Instructions

All the reagents are stored at 2-8°C. The kit is stable for 6 months from the date of receipt.

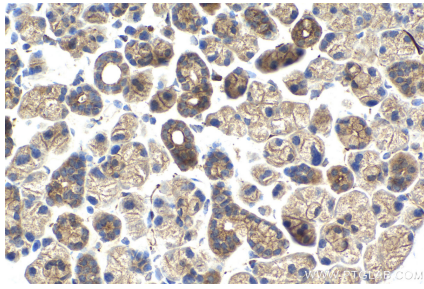
Background

HRAS, also named as c-bas/has and RASH1, is v-Ha-ras Harvey rat sarcoma viral oncogene homolog from the mammalian ras gene family and it is a member of the small GTPase superfamily. RAS proteins are involved in signal transduction pathways, and bind GDP/GTP and possess intrinsic GTPase activity. Defects in HRAS are a cause of cancer.

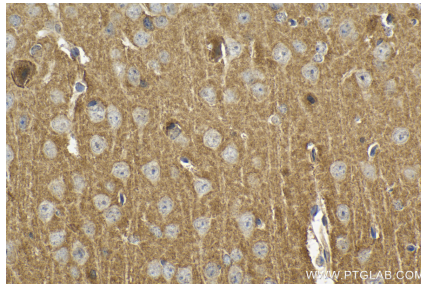
Synonyms

GTPase HRas, H RASIDX, HRAS1, EC:3.6.5.2, CTLO

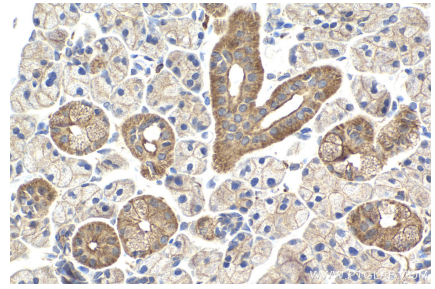
Selected Validation Data



Immunohistochemical analysis of paraffin-embedded mouse salivary gland tissue slide using KHC2155 (HRAS IHC Kit).



Immunohistochemical analysis of paraffin-embedded mouse brain tissue slide using KHC2155 (HRAS IHC Kit).



Immunohistochemical analysis of paraffin-embedded rat salivary gland tissue slide using KHC2155 (HRAS IHC Kit).