

IHC*easy* CYBB/NOX2 Ready-To-Use IHC Kit

Catalog Number: **KHC2158**

General Information

Sample type:
FFPE tissue

Cited sample type:

Reactivity:
Human, Mouse, Rat

Cited Reactivity:

Assay type:
Immunohistochemistry

Primary antibody type:
Rabbit Polyclonal

Secondary antibody type:
Polymer-HRP-Goat anti-Rabbit

Kit Component

Component	Size	Concentration
Antigen Retrieval Buffer	100 mL	50×
Washing Buffer	100 mL ×2	20×
Blocking Buffer	5 mL	RTU
Primary Antibody	5 mL	RTU
Secondary Antibody	5 mL	RTU
Chromogen Component A	0.2 mL	RTU
Chromogen Component B	4 mL	RTU
Signal Enhancer	5 mL	RTU
Counter Staining Reagent	5 mL	RTU
Mounting Media	5 mL	RTU
Control Slide	1 slide (Optional)	FFPE
Datasheet	1 Copy	
Manual	1 Copy	

Storage Instructions

All the reagents are stored at 2-8°C. The kit is stable for 6 months from the date of receipt.

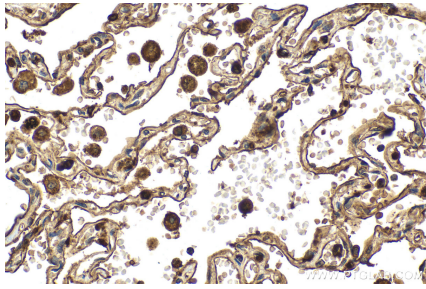
Background

NOX2, also named as CYBB, CGD, 91-phox, gp91-1, gp91-phox, p22 phagocyte B-cytochrome, cytochrome b-245 and beta polypeptide, is a critical component of the membrane-bound oxidase of phagocytes that generates superoxide. It is the terminal component of a respiratory chain that transfers single electrons from cytoplasmic NADPH across the plasma membrane to molecular oxygen on the exterior. This full length protein has three glycosylation sites.

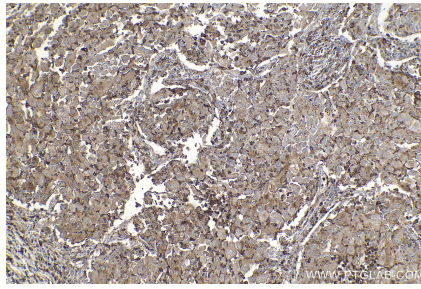
Synonyms

CGD, CGD91 phox, CYBB, Cytochrome b 245 heavy chain, Cytochrome b(558) subunit beta, Cytochrome b558 subunit beta, GP91 1, GP91 PHOX, GP91PHOX, NADPH oxidase 2, NOX2, p22 phagocyte B cytochrome, p91 PHOX

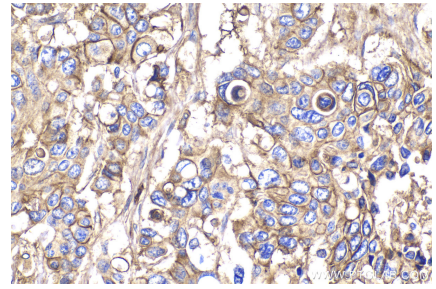
Selected Validation Data



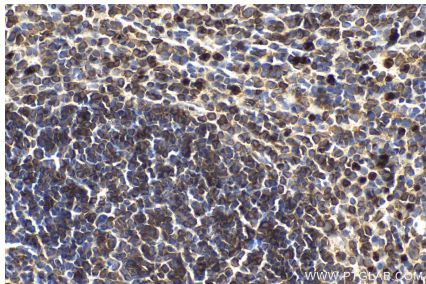
Immunohistochemical analysis of paraffin-embedded human lung tissue slide using KHC2158 (CYBB/NOX2 IHC Kit).



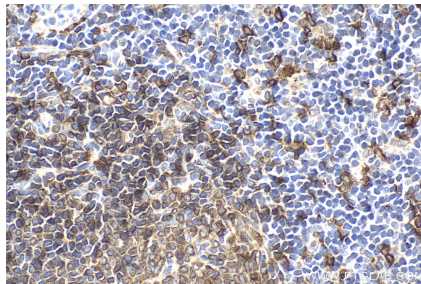
Immunohistochemical analysis of paraffin-embedded human lung cancer tissue slide using KHC2158 (CYBB/NOX2 IHC Kit).



Immunohistochemical analysis of paraffin-embedded human stomach cancer tissue slide using KHC2158 (CYBB/NOX2 IHC Kit).



Immunohistochemical analysis of paraffin-embedded mouse spleen tissue slide using KHC2158 (CYBB/NOX2 IHC Kit).



Immunohistochemical analysis of paraffin-embedded rat spleen tissue slide using KHC2158 (CYBB/NOX2 IHC Kit).