

# IHC*easy* GNAI2 Ready-To-Use IHC Kit

Catalog Number: **KHC2159**

## General Information

Sample type:  
FFPE tissue  
Cited sample type:  
Reactivity:  
Human  
Cited Reactivity:

Assay type:  
Immunohistochemistry  
Primary antibody type:  
Rabbit Polyclonal  
Secondary antibody type:  
Polymer-HRP-Goat anti-Rabbit

## Kit Component

Component	Size	Concentration
Antigen Retrieval Buffer	100 mL	50×
Washing Buffer	100 mL ×2	20×
Blocking Buffer	5 mL	RTU
Primary Antibody	5 mL	RTU
Secondary Antibody	5 mL	RTU
Chromogen Component A	0.2 mL	RTU
Chromogen Component B	4 mL	RTU
Signal Enhancer	5 mL	RTU
Counter Staining Reagent	5 mL	RTU
Mounting Media	5 mL	RTU
Control Slide	1 slide (Optional)	FFPE
Datasheet	1 Copy	
Manual	1 Copy	

## Storage Instructions

All the reagents are stored at 2-8°C. The kit is stable for 6 months from the date of receipt.

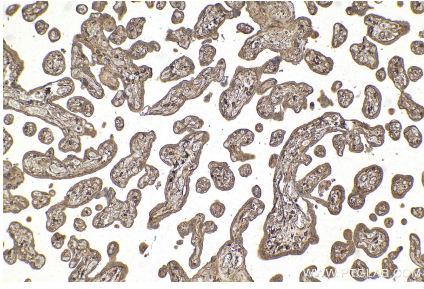
## Background

GNAI2, also named as GNAI2B, belongs to the G-alpha family, G(i/o/t/z) subfamily. Guanine nucleotide-binding proteins (G proteins) are involved as modulators or transducers in various transmembrane signaling systems. The G(i) proteins are involved in hormonal regulation of adenylate cyclase: they inhibit the cyclase in response to beta-adrenergic stimuli. GNAI2 is 93% homolog to GNAI1, 94% to GNAI3, 85% to GNAT3, 82% to GNAT2.

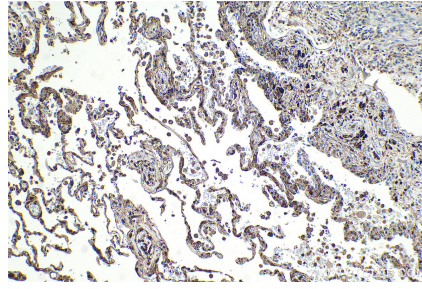
## Synonyms

H\_LUCA16.1, H\_LUCA15.1, Guanine nucleotide-binding protein G(i) subunit alpha-2, GNAI2B, GIP

## Selected Validation Data



Immunohistochemical analysis of paraffin-embedded human placenta tissue slide using KHC2159 (GNAI2 IHC Kit).



Immunohistochemical analysis of paraffin-embedded human lung tissue slide using KHC2159 (GNAI2 IHC Kit).