

IHC*easy* HIST1H1B Ready-To-Use IHC Kit

Catalog Number: **KHC2193**

General Information

Sample type:
FFPE tissue
Cited sample type:
Reactivity:
Human, Mouse, Rat
Cited Reactivity:

Assay type:
Immunohistochemistry
Primary antibody type:
Rabbit Polyclonal
Secondary antibody type:
Polymer-HRP-Goat anti-Rabbit

Kit Component

| Component | Size | Concentration |
|--------------------------|--------------------|---------------|
| Antigen Retrieval Buffer | 100 mL | 50× |
| Washing Buffer | 100 mL ×2 | 20× |
| Blocking Buffer | 5 mL | RTU |
| Primary Antibody | 5 mL | RTU |
| Secondary Antibody | 5 mL | RTU |
| Chromogen Component A | 0.2 mL | RTU |
| Chromogen Component B | 4 mL | RTU |
| Signal Enhancer | 5 mL | RTU |
| Counter Staining Reagent | 5 mL | RTU |
| Mounting Media | 5 mL | RTU |
| Control Slide | 1 slide (Optional) | FFPE |
| Datasheet | 1 Copy | |
| Manual | 1 Copy | |

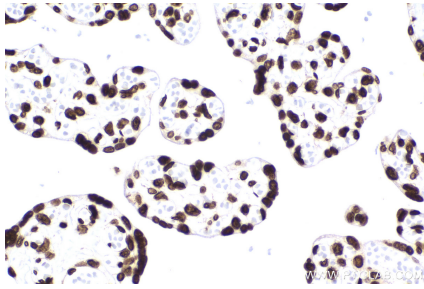
Storage Instructions

All the reagents are stored at 2-8°C. The kit is stable for 6 months from the date of receipt.

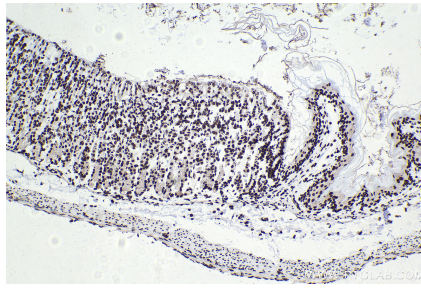
Background

Histones are basic nuclear proteins responsible for nucleosome structure of the chromosomal fiber in eukaryotes. Histone Cluster 1 H1 Family Member B (HIST1H1B) is a member of the Histone H1/H5 protein family. HIST1H1B gene has been found to be frequently mutated in colorectal cancer and follicular lymphomas. HIST1H1B overexpression contributes to tumor aggressiveness. HIST1H1B expression is upregulated in breast cancer and predicts poor prognosis.

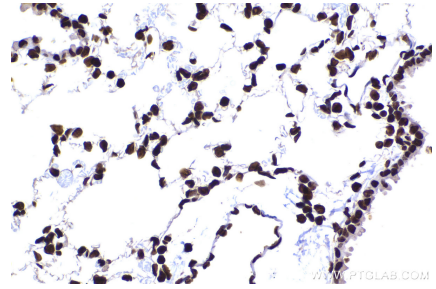
Selected Validation Data



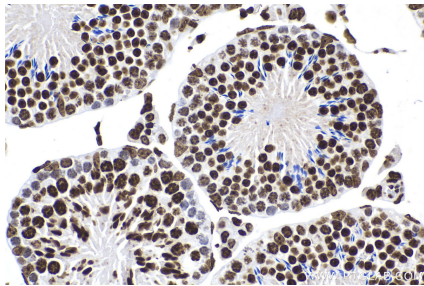
Immunohistochemical analysis of paraffin-embedded human placenta tissue slide using KHC2193 (HIST1H1B IHC Kit).



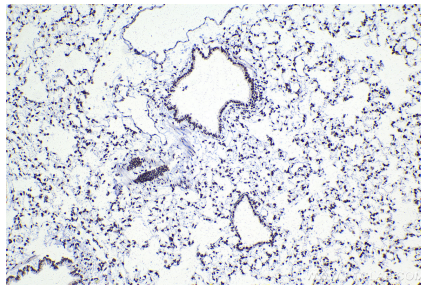
Immunohistochemical analysis of paraffin-embedded mouse stomach tissue slide using KHC2193 (HIST1H1B IHC Kit).



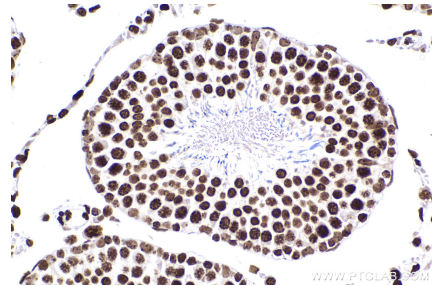
Immunohistochemical analysis of paraffin-embedded mouse lung tissue slide using KHC2193 (HIST1H1B IHC Kit).



Immunohistochemical analysis of paraffin-embedded mouse testis tissue slide using KHC2193 (HIST1H1B IHC Kit).



Immunohistochemical analysis of paraffin-embedded rat lung tissue slide using KHC2193 (HIST1H1B IHC Kit).



Immunohistochemical analysis of paraffin-embedded rat testis tissue slide using KHC2193 (HIST1H1B IHC Kit).