

IHC*easy* RPS6KB1 Ready-To-Use IHC Kit

Catalog Number: **KHC2211**

General Information

Sample type:
FFPE tissue

Cited sample type:

Reactivity:
Human, Mouse, Rat

Cited Reactivity:

Assay type:
Immunohistochemistry

Primary antibody type:
Rabbit Polyclonal

Secondary antibody type:
Polymer-HRP-Goat anti-Rabbit

Kit Component

Component	Size	Concentration
Antigen Retrieval Buffer	100 mL	50×
Washing Buffer	100 mL ×2	20×
Blocking Buffer	5 mL	RTU
Primary Antibody	5 mL	RTU
Secondary Antibody	5 mL	RTU
Chromogen Component A	0.2 mL	RTU
Chromogen Component B	4 mL	RTU
Signal Enhancer	5 mL	RTU
Counter Staining Reagent	5 mL	RTU
Mounting Media	5 mL	RTU
Control Slide	1 slide (Optional)	FFPE
Datasheet	1 Copy	
Manual	1 Copy	

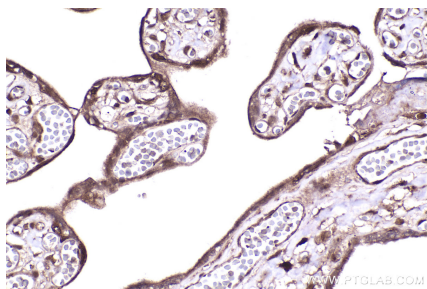
Storage Instructions

All the reagents are stored at 2-8°C. The kit is stable for 6 months from the date of receipt.

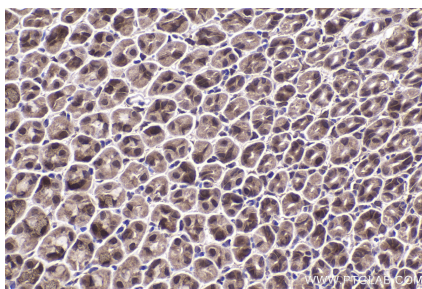
Background

RPS6KB1 (Ribosomal protein S6 kinase beta-1) is also named as STK14A, p70 S6KA, and belongs to the S6 kinase subfamily. RPS6KB1 is a major substrate of mTOR and acts as a crucial effector of mTOR signaling pathway. It plays a key role in cell growth and proliferation by regulating INS sensitivity, metabolism, protein synthesis, and cell cycle. RPS6KB1 may play an important role in the progression of HCC and could serve as a potential molecular target for HCC therapy. The Rps6kb1 gene encodes the 70 kDa ribosomal protein S6 kinase (p70S6K). The PI3K/mTOR signalling pathway is one of the major mechanisms for controlling cell survival, proliferation, and metabolism and is the central regulator of translation of some components of the protein synthesis system.

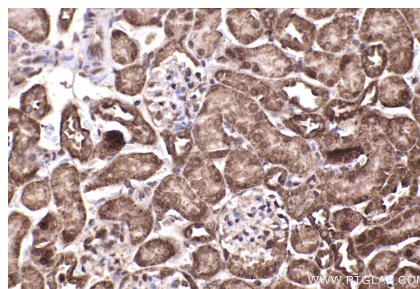
Selected Validation Data



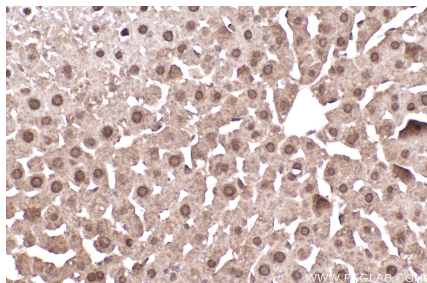
Immunohistochemical analysis of paraffin-embedded human placenta tissue slide using KHC2211 (RPS6KB1 IHC Kit).



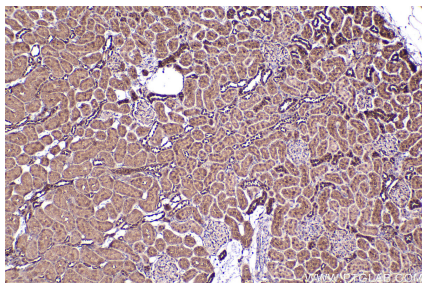
Immunohistochemical analysis of paraffin-embedded mouse stomach tissue slide using KHC2211 (RPS6KB1 IHC Kit).



Immunohistochemical analysis of paraffin-embedded mouse kidney tissue slide using KHC2211 (RPS6KB1 IHC Kit).



Immunohistochemical analysis of paraffin-embedded rat liver tissue slide using KHC2211 (RPS6KB1 IHC Kit).



Immunohistochemical analysis of paraffin-embedded rat kidney tissue slide using KHC2211 (RPS6KB1 IHC Kit).