

IHC*easy* STOM Ready-To-Use IHC Kit

Catalog Number: **KHC2213**

General Information

Sample type:
FFPE tissue
Cited sample type:
Reactivity:
Human
Cited Reactivity:

Assay type:
Immunohistochemistry
Primary antibody type:
Rabbit Polyclonal
Secondary antibody type:
Polymer-HRP-Goat anti-Rabbit

Kit Component

Component	Size	Concentration
Antigen Retrieval Buffer	100 mL	50×
Washing Buffer	100 mL × 2	20×
Blocking Buffer	5 mL	RTU
Primary Antibody	5 mL	RTU
Secondary Antibody	5 mL	RTU
Chromogen Component A	0.2 mL	RTU
Chromogen Component B	4 mL	RTU
Signal Enhancer	5 mL	RTU
Counter Staining Reagent	5 mL	RTU
Mounting Media	5 mL	RTU
Control Slide	1 slide (Optional)	FFPE
Datasheet	1 Copy	
Manual	1 Copy	

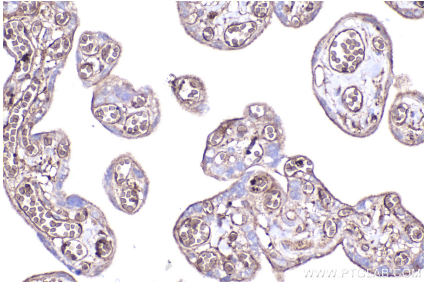
Storage Instructions

All the reagents are stored at 2-8°C. The kit is stable for 6 months from the date of receipt.

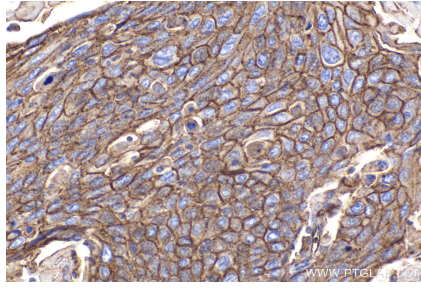
Background

STOM, also named as BND7, EPB72, Stomatin and Protein 7.2b, belongs to the band 7/mec-2 family. It is thought to regulate cation conductance. STOM may regulate ACCN1 and ACCN3 gating. STOM is a membrane protein involved in regulation of monovalent cation transport through lipid membranes. Interestingly, STOM (which has a structure similar to caveolin) is a major lipid-raft component of erythrocytes. It may have a role in membrane microdomains modulation leading to membrane budding and MPs release.

Selected Validation Data



Immunohistochemical analysis of paraffin-embedded human placenta tissue slide using KHC2213 (STOM IHC Kit).



Immunohistochemical analysis of paraffin-embedded human cervical cancer tissue slide using KHC2213 (STOM IHC Kit).