

IHC*easy* PDLIM4 Ready-To-Use IHC Kit

Catalog Number: **KHC2297**

General Information

Sample type:
FFPE tissue

Cited sample type:

Reactivity:
Human, Mouse, Rat

Cited Reactivity:

Assay type:
Immunohistochemistry

Primary antibody type:
Rabbit Polyclonal

Secondary antibody type:
Polymer-HRP-Goat anti-Rabbit

Kit Component

Component	Size	Concentration
Antigen Retrieval Buffer	100 mL	50×
Washing Buffer	100 mL ×2	20×
Blocking Buffer	5 mL	RTU
Primary Antibody	5 mL	RTU
Secondary Antibody	5 mL	RTU
Chromogen Component A	0.2 mL	RTU
Chromogen Component B	4 mL	RTU
Signal Enhancer	5 mL	RTU
Counter Staining Reagent	5 mL	RTU
Mounting Media	5 mL	RTU
Control Slide	1 slide (Optional)	FFPE
Datasheet	1 Copy	
Manual	1 Copy	

Storage Instructions

All the reagents are stored at 2-8°C. The kit is stable for 6 months from the date of receipt.

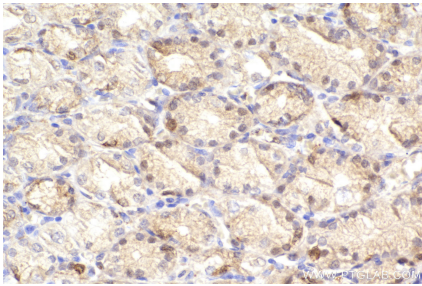
Background

PDLIM4, also known as RIL, is a member of the ALP/Enigma family. PDLIM4 contains one PDZ(DHR) domain and one LIM zinc-binding domain. The LIM zinc-binding domain interacts with the second and fourth PDZ domains of Fap-1, possibly resulting in the dephosphorylation of PDLIM4. PDLIM4 is involved in osteoblast development and function. The variation of the PDLIM4 locus may be an important determinant of osteoporosis.

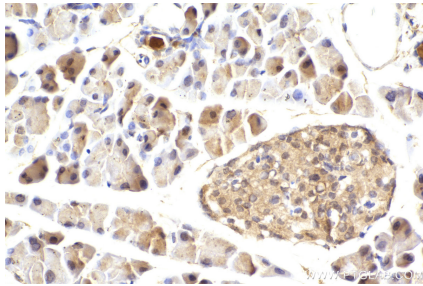
Synonyms

RIL, Reversion-induced LIM protein, PDZ and LIM domain 4

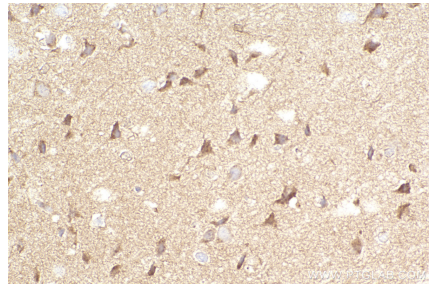
Selected Validation Data



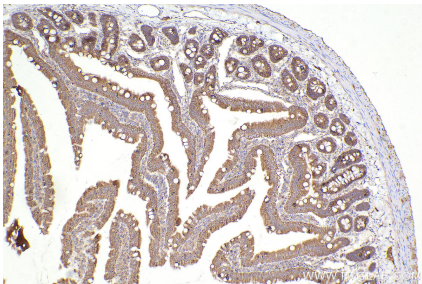
Immunohistochemical analysis of paraffin-embedded human stomach tissue slide using KHC2297 (PDLIM4 IHC Kit).



Immunohistochemical analysis of paraffin-embedded mouse pancreas tissue slide using KHC2297 (PDLIM4 IHC Kit).



Immunohistochemical analysis of paraffin-embedded rat brain tissue slide using KHC2297 (PDLIM4 IHC Kit).



Immunohistochemical analysis of paraffin-embedded rat small intestine tissue slide using KHC2297 (PDLIM4 IHC Kit).