

# IHC*easy* IST1 Ready-To-Use IHC Kit

Catalog Number: **KHC2322**

## General Information

**Sample type:**  
FFPE tissue

**Cited sample type:**

**Reactivity:**  
Human, Mouse, Rat

**Cited Reactivity:**

**Assay type:**  
Immunohistochemistry

**Primary antibody type:**  
Rabbit Polyclonal

**Secondary antibody type:**  
Polymer-HRP-Goat anti-Rabbit

## Kit Component

Component	Size	Concentration
Antigen Retrieval Buffer	100 mL	50×
Washing Buffer	100 mL ×2	20×
Blocking Buffer	5 mL	RTU
Primary Antibody	5 mL	RTU
Secondary Antibody	5 mL	RTU
Chromogen Component A	0.2 mL	RTU
Chromogen Component B	4 mL	RTU
Signal Enhancer	5 mL	RTU
Counter Staining Reagent	5 mL	RTU
Mounting Media	5 mL	RTU
Control Slide	1 slide (Optional)	FFPE
Datasheet	1 Copy	
Manual	1 Copy	

## Storage Instructions

All the reagents are stored at 2-8°C. The kit is stable for 6 months from the date of receipt.

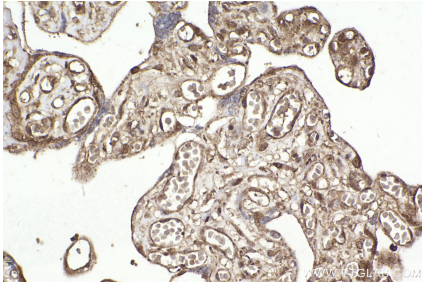
## Background

Human increased sodium tolerance-1 (hIST1), encoded by KIAA0174 gene, is a newly reported endosomal sorting complexes required for transport (ESCRT)-III family member. IST1 possesses two different types of microtubule-interacting and transport (MIT)-interacting motifs (MIM1 and MIM2), this is required for its interaction with calpain 7 which is important for their roles in the ESCRT system.

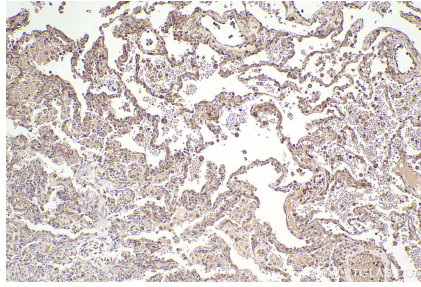
## Synonyms

KIAA0174, OLC1, IST1 homolog, hIST1, CHMP8

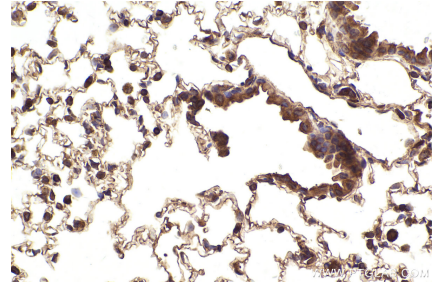
## Selected Validation Data



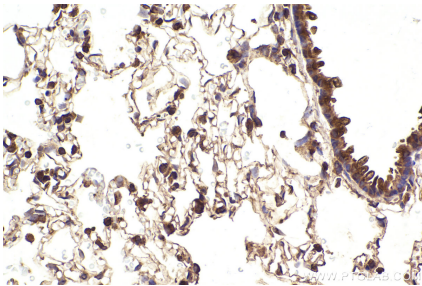
Immunohistochemical analysis of paraffin-embedded human placenta tissue slide using KHC2322 (IST1 IHC Kit).



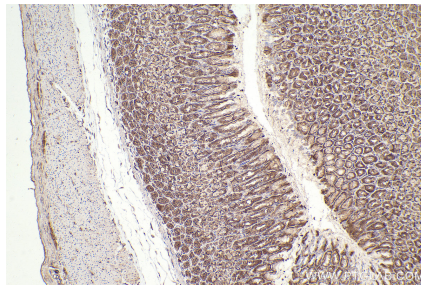
Immunohistochemical analysis of paraffin-embedded human lung tissue slide using KHC2322 (IST1 IHC Kit).



Immunohistochemical analysis of paraffin-embedded mouse lung tissue slide using KHC2322 (IST1 IHC Kit).



Immunohistochemical analysis of paraffin-embedded rat lung tissue slide using KHC2322 (IST1 IHC Kit).



Immunohistochemical analysis of paraffin-embedded rat stomach tissue slide using KHC2322 (IST1 IHC Kit).