

IHC*easy* NDUFV3 Ready-To-Use IHC Kit

Catalog Number: **KHC2329**

General Information

Sample type:
FFPE tissue
Cited sample type:
Reactivity:
Human, Mouse, Rat
Cited Reactivity:

Assay type:
Immunohistochemistry
Primary antibody type:
Rabbit Polyclonal
Secondary antibody type:
Polymer-HRP-Goat anti-Rabbit

Kit Component

Component	Size	Concentration
Antigen Retrieval Buffer	100 mL	50×
Washing Buffer	100 mL ×2	20×
Blocking Buffer	5 mL	RTU
Primary Antibody	5 mL	RTU
Secondary Antibody	5 mL	RTU
Chromogen Component A	0.2 mL	RTU
Chromogen Component B	4 mL	RTU
Signal Enhancer	5 mL	RTU
Counter Staining Reagent	5 mL	RTU
Mounting Media	5 mL	RTU
Control Slide	1 slide (Optional)	FFPE
Datasheet	1 Copy	
Manual	1 Copy	

Storage Instructions

All the reagents are stored at 2-8°C. The kit is stable for 6 months from the date of receipt.

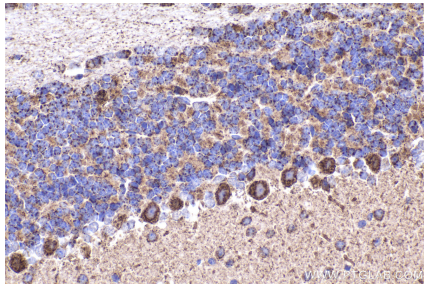
Background

NDUFV3(NADH dehydrogenase [ubiquinone] flavoprotein 3, mitochondrial) is also named as CI-9kD,Renal carcinoma antigen NY-REN-4 and belongs to the complex I NDUFV3 subunit family.It is an accessory subunit of the mitochondrial membrane respiratory chain NADH dehydrogenase (Complex I), that is believed not to be involved in catalysis.

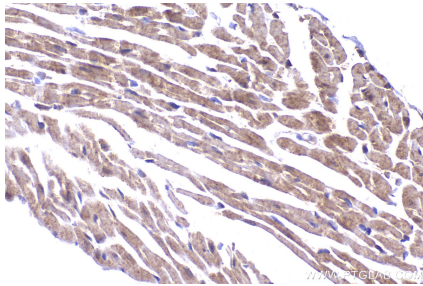
Synonyms

Renal carcinoma antigen NY-REN-4, NADH-ubiquinone oxidoreductase 9 kDa subunit, Complex I-9kD, Complex I 9kD, CI-9kD

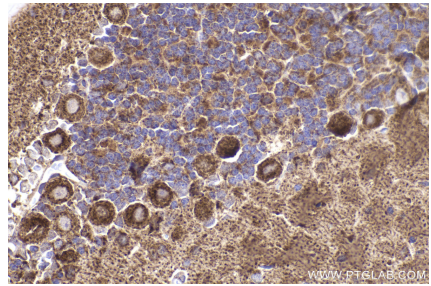
Selected Validation Data



Immunohistochemical analysis of paraffin-embedded mouse cerebellum tissue slide using KHC2329 (NDUFV3 IHC Kit).



Immunohistochemical analysis of paraffin-embedded mouse heart tissue slide using KHC2329 (NDUFV3 IHC Kit).



Immunohistochemical analysis of paraffin-embedded rat cerebellum tissue slide using KHC2329 (NDUFV3 IHC Kit).