

IHC*easy* GRB2 Ready-To-Use IHC Kit

Catalog Number: **KHC2355**

General Information

Sample type:
FFPE tissue

Cited sample type:

Reactivity:
Human, Mouse, Rat

Cited Reactivity:

Assay type:
Immunohistochemistry

Primary antibody type:
Rabbit Polyclonal

Secondary antibody type:
Polymer-HRP-Goat anti-Rabbit

Kit Component

Component	Size	Concentration
Antigen Retrieval Buffer	100 mL	50×
Washing Buffer	100 mL ×2	20×
Blocking Buffer	5 mL	RTU
Primary Antibody	5 mL	RTU
Secondary Antibody	5 mL	RTU
Chromogen Component A	0.2 mL	RTU
Chromogen Component B	4 mL	RTU
Signal Enhancer	5 mL	RTU
Counter Staining Reagent	5 mL	RTU
Mounting Media	5 mL	RTU
Control Slide	1 slide (Optional)	FFPE
Datasheet	1 Copy	
Manual	1 Copy	

Storage Instructions

All the reagents are stored at 2-8°C. The kit is stable for 6 months from the date of receipt.

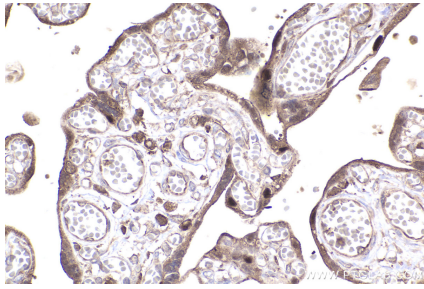
Background

GRB2 (growth factor receptor-bound protein 2) binds the epidermal growth factor receptor and contains one SH2 domain and two SH3 domains. Two alternatively spliced transcript variants encoding different isoforms have been found for this gene. N-SH3 domain of Grb2 was involved in the protein vesicular localization including amyloid-beta protein precursor. Involvement of GRB2 in Ras-signaling pathway has been reported, recent finding show that GRB2 may also play a complex role in T and B-cell antigen receptor signaling.

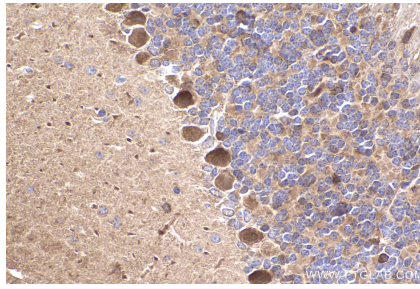
Synonyms

Growth factor receptor-bound protein 2, Grb33, EGFRBP GRB2, ASH

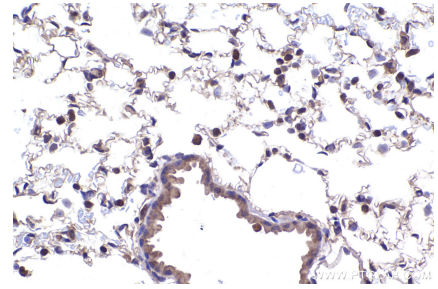
Selected Validation Data



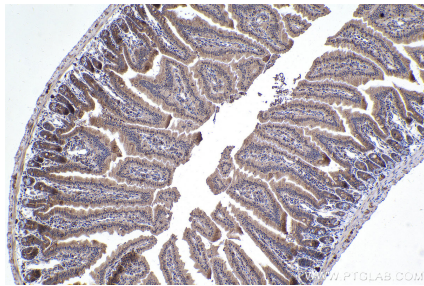
Immunohistochemical analysis of paraffin-embedded human placenta tissue slide using KHC2355 (GRB2 IHC Kit).



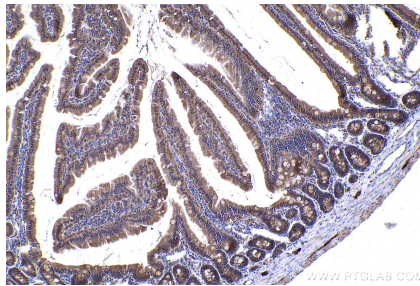
Immunohistochemical analysis of paraffin-embedded mouse cerebellum tissue slide using KHC2355 (GRB2 IHC Kit).



Immunohistochemical analysis of paraffin-embedded mouse lung tissue slide using KHC2355 (GRB2 IHC Kit).



Immunohistochemical analysis of paraffin-embedded mouse small intestine tissue slide using KHC2355 (GRB2 IHC Kit).



Immunohistochemical analysis of paraffin-embedded rat small intestine tissue slide using KHC2355 (GRB2 IHC Kit).