

IHC*easy* ARG2 Ready-To-Use IHC Kit

Catalog Number: **KHC2367**

General Information

Sample type:
FFPE tissue
Cited sample type:
Reactivity:
Human, Mouse, Rat
Cited Reactivity:

Assay type:
Immunohistochemistry
Primary antibody type:
Rabbit Polyclonal
Secondary antibody type:
Polymer-HRP-Goat anti-Rabbit

Kit Component

Component	Size	Concentration
Antigen Retrieval Buffer	100 mL	50×
Washing Buffer	100 mL ×2	20×
Blocking Buffer	5 mL	RTU
Primary Antibody	5 mL	RTU
Secondary Antibody	5 mL	RTU
Chromogen Component A	0.2 mL	RTU
Chromogen Component B	4 mL	RTU
Signal Enhancer	5 mL	RTU
Counter Staining Reagent	5 mL	RTU
Mounting Media	5 mL	RTU
Control Slide	1 slide (Optional)	FFPE
Datasheet	1 Copy	
Manual	1 Copy	

Storage Instructions

All the reagents are stored at 2-8°C. The kit is stable for 6 months from the date of receipt.

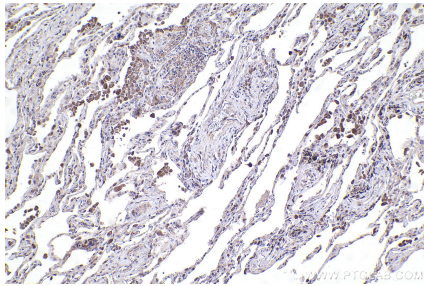
Background

ARG2(Arginase-2, mitochondrial) is also named as kidney-type arginase, non-hepatic arginase and belongs to the arginase family. It may play a role in the regulation of extra-urea cycle arginine metabolism and also in down-regulation of nitric oxide synthesis.

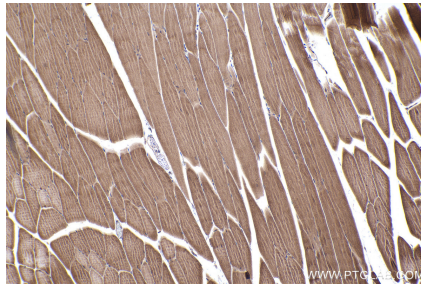
Synonyms

Kidney type arginase, EC:3.5.3.1, Arginase-2, mitochondrial, arginase, type II, Arginase II

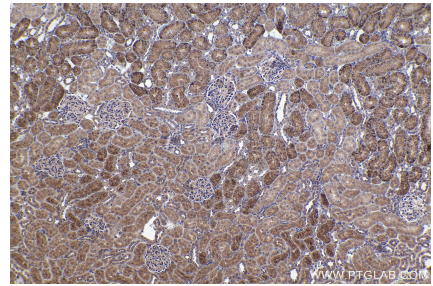
Selected Validation Data



Immunohistochemical analysis of paraffin-embedded human lung tissue slide using KHC2367 (ARG2 IHC Kit).



Immunohistochemical analysis of paraffin-embedded mouse skeletal muscle tissue slide using KHC2367 (ARG2 IHC Kit).



Immunohistochemical analysis of paraffin-embedded rat kidney tissue slide using KHC2367 (ARG2 IHC Kit).