

IHCeasy[®] BOP1 Ready-To-Use IHC Kit

Catalog Number: **KHC2447**

General Information

Sample type:
FFPE tissue
Cited sample type:
Reactivity:
Human
Cited Reactivity:

Assay type:
Immunohistochemistry
Primary antibody type:
Rabbit Recombinant
Secondary antibody type:
Polymer-HRP-Goat anti-Rabbit

Kit Component

Component	Size	Concentration
Antigen Retrieval Buffer	100 mL	50×
Washing Buffer	100 mL ×2	20×
Blocking Buffer	5 mL	RTU
Primary Antibody	5 mL	RTU
Secondary Antibody	5 mL	RTU
Chromogen Component A	0.2 mL	RTU
Chromogen Component B	4 mL	RTU
Signal Enhancer	5 mL	RTU
Counter Staining Reagent	5 mL	RTU
Mounting Media	5 mL	RTU
Control Slide	1 slide (Optional)	FFPE
Datasheet	1 Copy	
Manual	1 Copy	

Storage Instructions

All the reagents are stored at 2-8°C. The kit is stable for 6 months from the date of receipt.

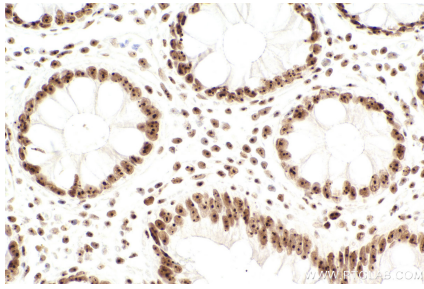
Background

Block of Proliferation 1(BOP1) protein was first isolated from a mouse, and the truncation protein may lead to cell cycle arrest. Bop1 plays a role in processing of the 28S and 5.8S rRNAs (ribosomal RNAs) to regulate ribosome biogenesis. And Bop1 also act as a component of Pes1/Bop1/WDR21 (PeBoW) complex for mature 60S ribosome, and consequently acts during cell division at G1 checkpoints. What's more, abnormal expression of BOP1 was associated with liver or colorectal cancers.

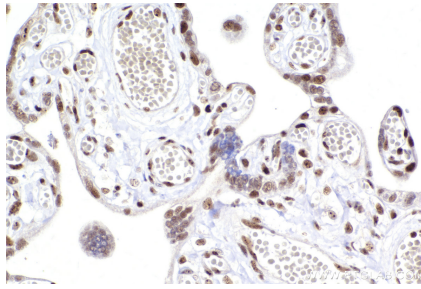
Synonyms

BOP1,block of proliferation 1,KIAA0124

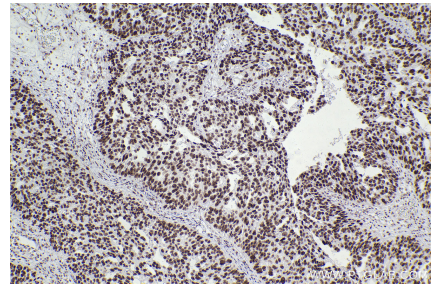
Selected Validation Data



Immunohistochemical analysis of paraffin-embedded human rectal cancer tissue slide using KHC2447 (BOP1 IHC Kit).



Immunohistochemical analysis of paraffin-embedded human placenta tissue slide using KHC2447 (BOP1 IHC Kit).



Immunohistochemical analysis of paraffin-embedded human ovary cancer tissue slide using KHC2447 (BOP1 IHC Kit).