

IHC*easy* NCAPD2 Ready-To-Use IHC Kit

Catalog Number: **KHC2478**

General Information

Sample type:
FFPE tissue

Cited sample type:

Reactivity:
Human, Mouse, Rat

Cited Reactivity:

Assay type:
Immunohistochemistry

Primary antibody type:
Rabbit Polyclonal

Secondary antibody type:
Polymer-HRP-Goat anti-Rabbit

Kit Component

Component	Size	Concentration
Antigen Retrieval Buffer	100 mL	50×
Washing Buffer	100 mL ×2	20×
Blocking Buffer	5 mL	RTU
Primary Antibody	5 mL	RTU
Secondary Antibody	5 mL	RTU
Chromogen Component A	0.2 mL	RTU
Chromogen Component B	4 mL	RTU
Signal Enhancer	5 mL	RTU
Counter Staining Reagent	5 mL	RTU
Mounting Media	5 mL	RTU
Control Slide	1 slide (Optional)	FFPE
Datasheet	1 Copy	
Manual	1 Copy	

Storage Instructions

All the reagents are stored at 2-8°C. The kit is stable for 6 months from the date of receipt.

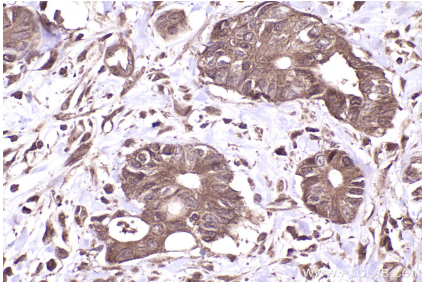
Background

NCAPD2 is a regulatory subunit of the condensin complex, which is required for conversion of interphase chromatin into mitotic-like condense chromosomes. Condensin complexes are heteropentamers comprised of two SMC (structural maintenance of chromosomes) subunits and three non-SMC subunits. The C-terminus of NCAPD2 interacts with Histones H1 and H3 through their histone tails. A loss of NCAPD2 can lead to the disorganization of chromatid axes, misalignment of sister chromatids during metaphase and delayed entry into anaphase.

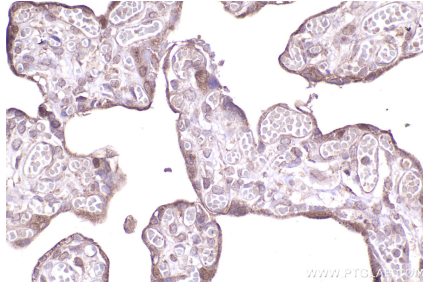
Synonyms

NCAPD2,CAP D2,CAPD2,Chromosome condensation-relate

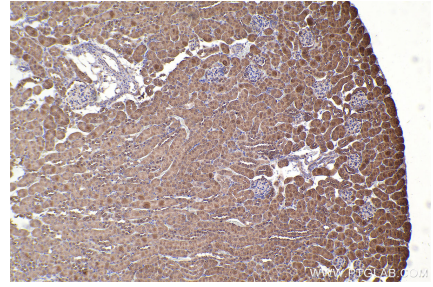
Selected Validation Data



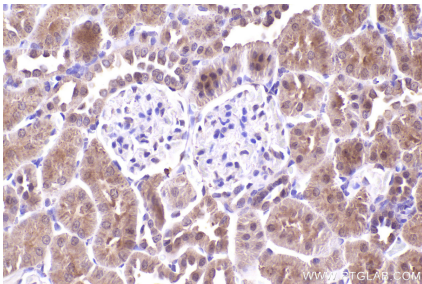
Immunohistochemical analysis of paraffin-embedded human rectal cancer tissue slide using KHC2478 (NCAPD2 IHC Kit).



Immunohistochemical analysis of paraffin-embedded human placenta tissue slide using KHC2478 (NCAPD2 IHC Kit).



Immunohistochemical analysis of paraffin-embedded mouse kidney tissue slide using KHC2478 (NCAPD2 IHC Kit).



Immunohistochemical analysis of paraffin-embedded rat kidney tissue slide using KHC2478 (NCAPD2 IHC Kit).