

IHC*easy* CDK10 Ready-To-Use IHC Kit

Catalog Number: **KHC2480**

General Information

Sample type:
FFPE tissue

Cited sample type:

Reactivity:
Human, Mouse, Rat

Cited Reactivity:

Assay type:
Immunohistochemistry

Primary antibody type:
Rabbit Polyclonal

Secondary antibody type:
Polymer-HRP-Goat anti-Rabbit

Kit Component

| Component | Size | Concentration |
|--------------------------|--------------------|---------------|
| Antigen Retrieval Buffer | 100 mL | 50× |
| Washing Buffer | 100 mL ×2 | 20× |
| Blocking Buffer | 5 mL | RTU |
| Primary Antibody | 5 mL | RTU |
| Secondary Antibody | 5 mL | RTU |
| Chromogen Component A | 0.2 mL | RTU |
| Chromogen Component B | 4 mL | RTU |
| Signal Enhancer | 5 mL | RTU |
| Counter Staining Reagent | 5 mL | RTU |
| Mounting Media | 5 mL | RTU |
| Control Slide | 1 slide (Optional) | FFPE |
| Datasheet | 1 Copy | |
| Manual | 1 Copy | |

Storage Instructions

All the reagents are stored at 2-8°C. The kit is stable for 6 months from the date of receipt.

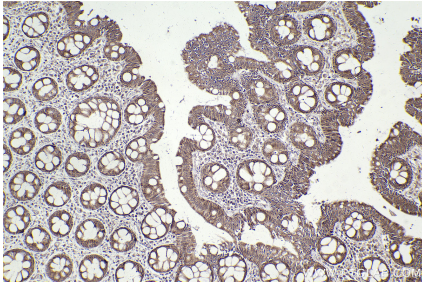
Background

Cyclin-dependent kinase 10 (CDK10) is a Cdc2-related kinase that was discovered based on its homology to the Cdc2 PSTA1RE amino acid domain. CDK10 plays a pivotal role in the regulation of fundamental cellular processes, including cell proliferation, transcription regulation, and cell cycle regulation. It partners with cyclin M to phosphorylate substrates such as ETS2 and PKN2 in order to modulate cellular growth. Initial reports have indicated that CDK10 may act as a tumor suppressor in breast cancer. Additional studies have demonstrated tumor suppressive and oncogenic roles for CDK10 in malignancies such as hepatobiliary cancers, gastric cancer, glioma, nasopharyngeal carcinoma, and colorectal cancer.

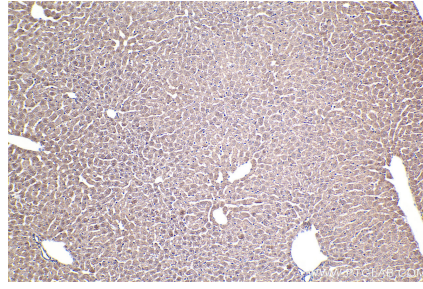
Synonyms

CDK10, Cyclin dependent kinase 10, Cyclin-dependent

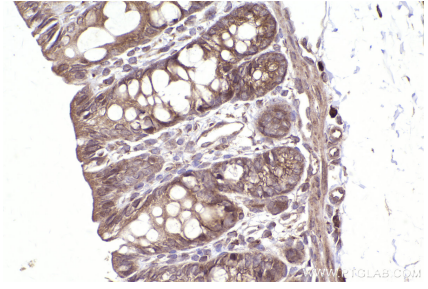
Selected Validation Data



Immunohistochemical analysis of paraffin-embedded human rectal cancer tissue slide using KHC2480 (CDK10 IHC Kit).



Immunohistochemical analysis of paraffin-embedded mouse liver tissue slide using KHC2480 (CDK10 IHC Kit).



Immunohistochemical analysis of paraffin-embedded rat colon tissue slide using KHC2480 (CDK10 IHC Kit).