

IHC*easy* STK38 Ready-To-Use IHC Kit

Catalog Number: **KHC2483**

General Information

Sample type:
FFPE tissue

Cited sample type:

Reactivity:
Human, Mouse, Rat

Cited Reactivity:

Assay type:
Immunohistochemistry

Primary antibody type:
Rabbit Polyclonal

Secondary antibody type:
Polymer-HRP-Goat anti-Rabbit

Kit Component

Component	Size	Concentration
Antigen Retrieval Buffer	100 mL	50×
Washing Buffer	100 mL ×2	20×
Blocking Buffer	5 mL	RTU
Primary Antibody	5 mL	RTU
Secondary Antibody	5 mL	RTU
Chromogen Component A	0.2 mL	RTU
Chromogen Component B	4 mL	RTU
Signal Enhancer	5 mL	RTU
Counter Staining Reagent	5 mL	RTU
Mounting Media	5 mL	RTU
Control Slide	1 slide (Optional)	FFPE
Datasheet	1 Copy	
Manual	1 Copy	

Storage Instructions

All the reagents are stored at 2-8°C. The kit is stable for 6 months from the date of receipt.

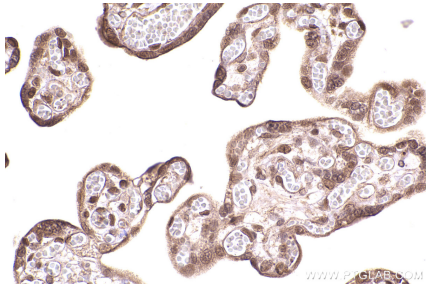
Background

Serine/threonine-protein kinase 38 belongs to AGC Ser/Thr protein kinase family. STK38 implicates in cell proliferation and/or tumor progression, and might play a role in the HIV-1 life cycle. Researches showed that STK38 with STK38L, were proapoptotic kinases and key members of the RASSF1/STK4 signaling cascade and its kinase activity increased in early mitotic phase and was dependent on FRY and STK3.

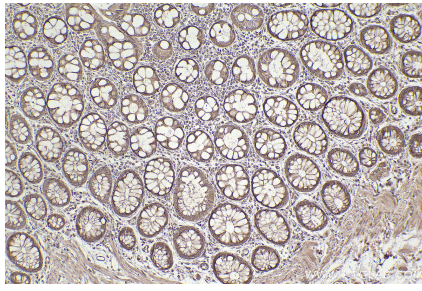
Synonyms

STK38,EC:2.7.11.1,NDR,NDR1,NDR1 protein kinase

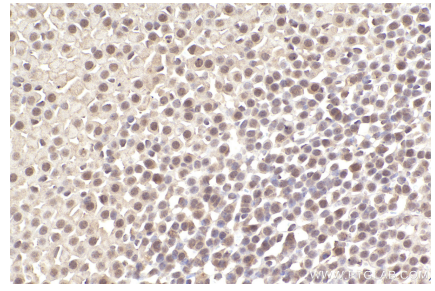
Selected Validation Data



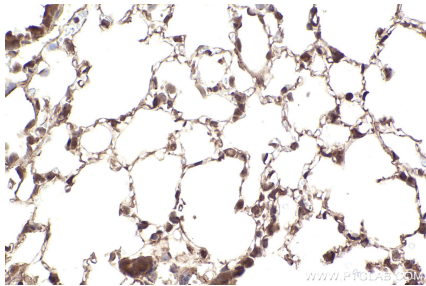
Immunohistochemical analysis of paraffin-embedded human placenta tissue slide using KHC2483 (STK38 IHC Kit).



Immunohistochemical analysis of paraffin-embedded human rectal cancer tissue slide using KHC2483 (STK38 IHC Kit).



Immunohistochemical analysis of paraffin-embedded mouse adrenal gland tissue slide using KHC2483 (STK38 IHC Kit).



Immunohistochemical analysis of paraffin-embedded mouse lung tissue slide using KHC2483 (STK38 IHC Kit).