

IHCeasy[®] MAPRE2 Ready-To-Use IHC Kit

Catalog Number: **KHC2491**

General Information

Sample type:
FFPE tissue
Cited sample type:
Reactivity:
Human
Cited Reactivity:

Assay type:
Immunohistochemistry
Primary antibody type:
Rabbit Polyclonal
Secondary antibody type:
Polymer-HRP-Goat anti-Rabbit

Kit Component

Component	Size	Concentration
Antigen Retrieval Buffer	100 mL	50×
Washing Buffer	100 mL ×2	20×
Blocking Buffer	5 mL	RTU
Primary Antibody	5 mL	RTU
Secondary Antibody	5 mL	RTU
Chromogen Component A	0.2 mL	RTU
Chromogen Component B	4 mL	RTU
Signal Enhancer	5 mL	RTU
Counter Staining Reagent	5 mL	RTU
Mounting Media	5 mL	RTU
Control Slide	1 slide (Optional)	FFPE
Datasheet	1 Copy	
Manual	1 Copy	

Storage Instructions

All the reagents are stored at 2-8°C. The kit is stable for 6 months from the date of receipt.

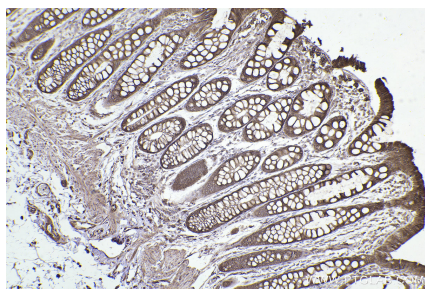
Background

RP1 protein shares significant homology to the adenomatous polyposis coli (APC) protein-binding EB1 gene family and binds specifically to the C-terminal region of the APC protein. RP1 also binds directly to tubulin, both in vitro and in vivo. The function of RP1 is currently unknown; however, its homology suggests involvement in tumorigenesis of colorectal cancers and proliferative control of normal cells. It may belong to the intermediate/early gene family, involved in the signal transduction cascade downstream of the TCR.

Synonyms

MAPRE2, APC binding protein EB2, APC-binding protein

Selected Validation Data



Immunohistochemical analysis of paraffin-embedded human rectal cancer tissue slide using KHC2491 (MAPRE2 IHC Kit).