

IHC*easy* MYLK Ready-To-Use IHC Kit

Catalog Number: **KHC2496**

General Information

Sample type:
FFPE tissue
Cited sample type:
Reactivity:
Human, Mouse, Rat
Cited Reactivity:

Assay type:
Immunohistochemistry
Primary antibody type:
Rabbit Polyclonal
Secondary antibody type:
Polymer-HRP-Goat anti-Rabbit

Kit Component

Component	Size	Concentration
Antigen Retrieval Buffer	100 mL	50×
Washing Buffer	100 mL ×2	20×
Blocking Buffer	5 mL	RTU
Primary Antibody	5 mL	RTU
Secondary Antibody	5 mL	RTU
Chromogen Component A	0.2 mL	RTU
Chromogen Component B	4 mL	RTU
Signal Enhancer	5 mL	RTU
Counter Staining Reagent	5 mL	RTU
Mounting Media	5 mL	RTU
Control Slide	1 slide (Optional)	FFPE
Datasheet	1 Copy	
Manual	1 Copy	

Storage Instructions

All the reagents are stored at 2-8°C. The kit is stable for 6 months from the date of receipt.

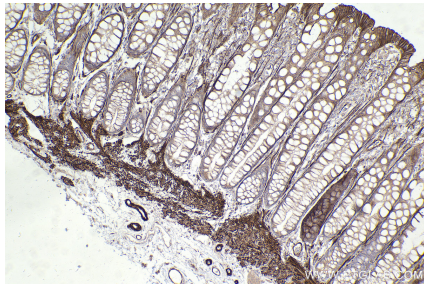
Background

MYLK(Myosin light chain kinase) is also named as MLCK, MLCK1, MYLK1 and belongs to the protein kinase superfamily. It is a key enzyme in muscle contraction. Its activation is sufficient to enhance paracellular permeability and is required for tight junction barrier regulation in response to Na⁺-nutrient cotransport, inflammatory cytokines, or pathogenic bacteria. The expression of smooth muscle MYLK is tissue-specific. Smooth muscle MYLK generates three different proteins, long MYLK, short MYLK, and telokin. The 130-kDa smooth muscle, or short, MYLK (130 kDa) is expressed in smooth muscles.

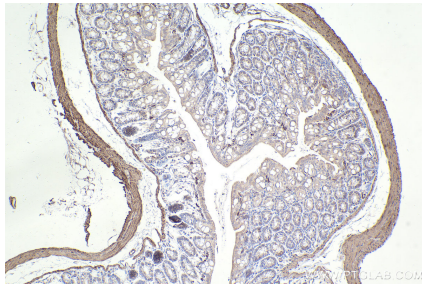
Synonyms

MYLK,EC:2.7.11.18,Kinase-related protein,KRP,MLCK

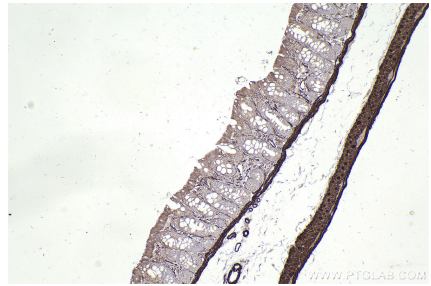
Selected Validation Data



Immunohistochemical analysis of paraffin-embedded human rectal cancer tissue slide using KHC2496 (MYLK IHC Kit).



Immunohistochemical analysis of paraffin-embedded mouse colon tissue slide using KHC2496 (MYLK IHC Kit).



Immunohistochemical analysis of paraffin-embedded rat colon tissue slide using KHC2496 (MYLK IHC Kit).