

# IHC*easy* RAB11B Ready-To-Use IHC Kit

Catalog Number: **KHC2501**

## General Information

**Sample type:**  
FFPE tissue

**Cited sample type:**

**Reactivity:**  
Human, Mouse, Rat

**Cited Reactivity:**

**Assay type:**  
Immunohistochemistry

**Primary antibody type:**  
Mouse Monoclonal

**Secondary antibody type:**  
Polymer-HRP-Goat anti-Mouse

## Kit Component

Component	Size	Concentration
Antigen Retrieval Buffer	100 mL	50×
Washing Buffer	100 mL ×2	20×
Blocking Buffer	5 mL	RTU
Primary Antibody	5 mL	RTU
Secondary Antibody	5 mL	RTU
Chromogen Component A	0.2 mL	RTU
Chromogen Component B	4 mL	RTU
Signal Enhancer	5 mL	RTU
Counter Staining Reagent	5 mL	RTU
Mounting Media	5 mL	RTU
Control Slide	1 slide (Optional)	FFPE
Datasheet	1 Copy	
Manual	1 Copy	

## Storage Instructions

All the reagents are stored at 2-8°C. The kit is stable for 6 months from the date of receipt.

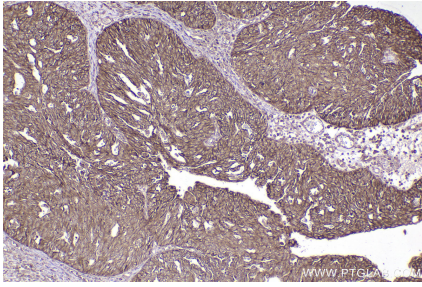
## Background

RAB11B, also named as YPT3, belongs to the small GTPase superfamily and Rab family. RAB11B possesses GTPase activity.

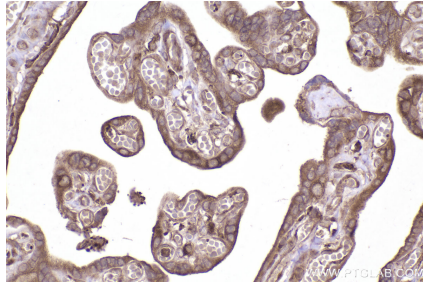
## Synonyms

RAB11B,EC:3.6.5.2,GTP binding protein YPT3,GTP-bin

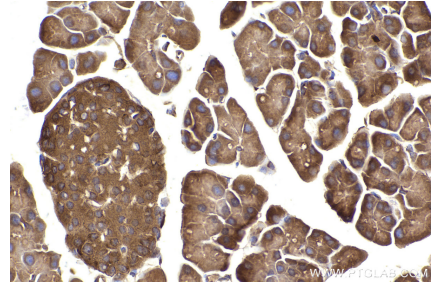
## Selected Validation Data



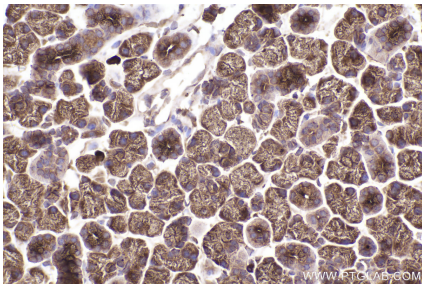
Immunohistochemical analysis of paraffin-embedded human ovary cancer tissue slide using KHC2501 (RAB11B IHC Kit).



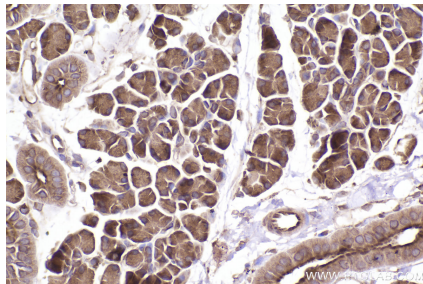
Immunohistochemical analysis of paraffin-embedded human placenta tissue slide using KHC2501 (RAB11B IHC Kit).



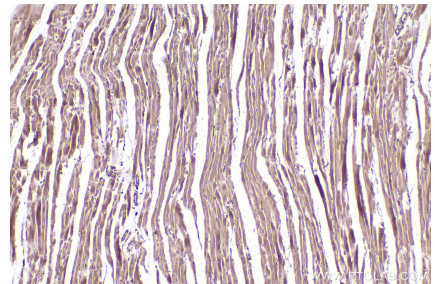
Immunohistochemical analysis of paraffin-embedded mouse pancreas tissue slide using KHC2501 (RAB11B IHC Kit).



Immunohistochemical analysis of paraffin-embedded mouse salivary gland tissue slide using KHC2501 (RAB11B IHC Kit).



Immunohistochemical analysis of paraffin-embedded rat salivary gland tissue slide using KHC2501 (RAB11B IHC Kit).



Immunohistochemical analysis of paraffin-embedded rat heart tissue slide using KHC2501 (RAB11B IHC Kit).