

IHC*easy* NDUFA5 Ready-To-Use IHC Kit

Catalog Number: **KHC2507**

General Information

Sample type:
FFPE tissue

Cited sample type:

Reactivity:
Human, Mouse, Rat

Cited Reactivity:

Assay type:
Immunohistochemistry

Primary antibody type:
Rabbit Polyclonal

Secondary antibody type:
Polymer-HRP-Goat anti-Rabbit

Kit Component

Component	Size	Concentration
Antigen Retrieval Buffer	100 mL	50×
Washing Buffer	100 mL ×2	20×
Blocking Buffer	5 mL	RTU
Primary Antibody	5 mL	RTU
Secondary Antibody	5 mL	RTU
Chromogen Component A	0.2 mL	RTU
Chromogen Component B	4 mL	RTU
Signal Enhancer	5 mL	RTU
Counter Staining Reagent	5 mL	RTU
Mounting Media	5 mL	RTU
Control Slide	1 slide (Optional)	FFPE
Datasheet	1 Copy	
Manual	1 Copy	

Storage Instructions

All the reagents are stored at 2-8°C. The kit is stable for 6 months from the date of receipt.

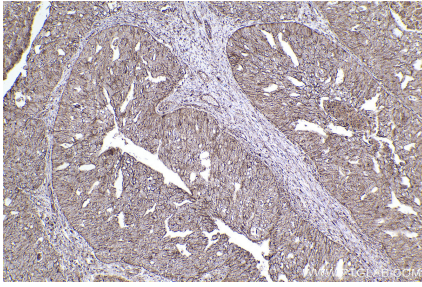
Background

NDUFA5, also named as CI-13kD-B and NDUA5, belongs to the complex I NDUFA5 subunit family. It is accessory subunit of the mitochondrial membrane respiratory chain NADH dehydrogenase (Complex I) which functions in the transfer of electrons from NADH to the respiratory chain. NDUFA5, an enrichment of mitochondrial protein, can be used as a mitochondrial marker protein.

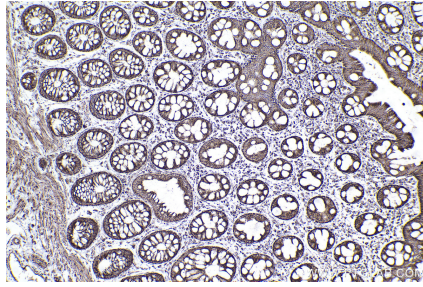
Synonyms

NDUFA5,B13,CI 13KD B,CI-13kD-B,Complex I 13kD B

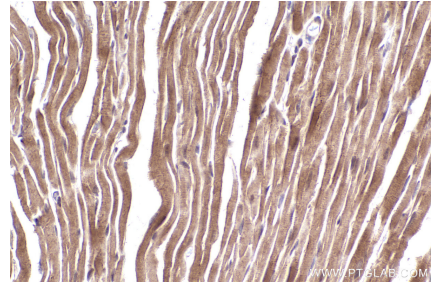
Selected Validation Data



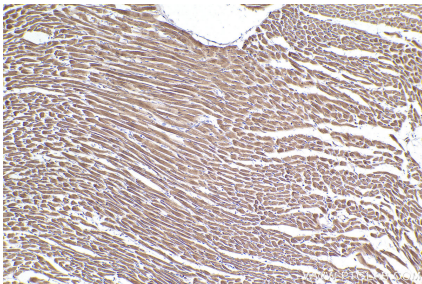
Immunohistochemical analysis of paraffin-embedded human ovary cancer tissue slide using KHC2507 (NDUFA5 IHC Kit).



Immunohistochemical analysis of paraffin-embedded human rectal cancer tissue slide using KHC2507 (NDUFA5 IHC Kit).



Immunohistochemical analysis of paraffin-embedded mouse heart tissue slide using KHC2507 (NDUFA5 IHC Kit).



Immunohistochemical analysis of paraffin-embedded rat heart tissue slide using KHC2507 (NDUFA5 IHC Kit).