

# IHC*easy* DUSP7 Ready-To-Use IHC Kit

Catalog Number: **KHC2522**

## General Information

Sample type:  
FFPE tissue  
Cited sample type:  
Reactivity:  
Human  
Cited Reactivity:

Assay type:  
Immunohistochemistry  
Primary antibody type:  
Rabbit Polyclonal  
Secondary antibody type:  
Polymer-HRP-Goat anti-Rabbit

## Kit Component

Component	Size	Concentration
Antigen Retrieval Buffer	100 mL	50×
Washing Buffer	100 mL ×2	20×
Blocking Buffer	5 mL	RTU
Primary Antibody	5 mL	RTU
Secondary Antibody	5 mL	RTU
Chromogen Component A	0.2 mL	RTU
Chromogen Component B	4 mL	RTU
Signal Enhancer	5 mL	RTU
Counter Staining Reagent	5 mL	RTU
Mounting Media	5 mL	RTU
Control Slide	1 slide (Optional)	FFPE
Datasheet	1 Copy	
Manual	1 Copy	

## Storage Instructions

All the reagents are stored at 2-8°C. The kit is stable for 6 months from the date of receipt.

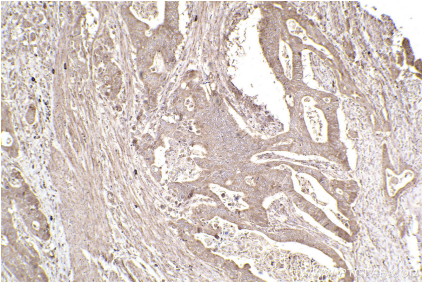
## Background

Human dual-specificity phosphatase 7 (DUSP7/PYST2) is a member of a structurally homologous subfamily of MAP kinase phosphatases. DUSP7 is overexpressed in myeloid leukemia and other malignancies. It is known to bind and dephosphorylate Erk11, and as it, along with the other members of the DUSP family expresses high selectively for MAP kinases. It has been suggested that it functions as a method for selectively activating/deactivating different members of that family.

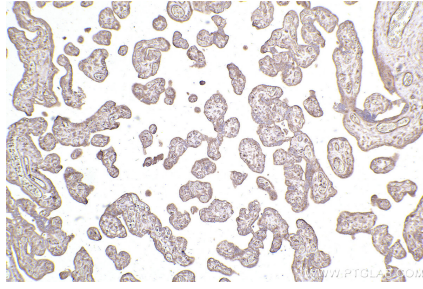
## Synonyms

DUSP7,DUSP7/PYST2,dual specificity phosphatase 7,E

## Selected Validation Data



Immunohistochemical analysis of paraffin-embedded human stomach cancer tissue slide using KHC2522 (DUSP7 IHC Kit).



Immunohistochemical analysis of paraffin-embedded human placenta tissue slide using KHC2522 (DUSP7 IHC Kit).