

IHCeasy[®] RNASEH2B Ready-To-Use IHC Kit

Catalog Number: **KHC2557**

General Information

Sample type:
FFPE tissue
Cited sample type:
Reactivity:
Human, Mouse
Cited Reactivity:

Assay type:
Immunohistochemistry
Primary antibody type:
Rabbit Recombinant
Secondary antibody type:
Polymer-HRP-Goat anti-Rabbit

Kit Component

Component	Size	Concentration
Antigen Retrieval Buffer	100 mL	50×
Washing Buffer	100 mL ×2	20×
Blocking Buffer	5 mL	RTU
Primary Antibody	5 mL	RTU
Secondary Antibody	5 mL	RTU
Chromogen Component A	0.2 mL	RTU
Chromogen Component B	4 mL	RTU
Signal Enhancer	5 mL	RTU
Counter Staining Reagent	5 mL	RTU
Mounting Media	5 mL	RTU
Control Slide	1 slide (Optional)	FFPE
Datasheet	1 Copy	
Manual	1 Copy	

Storage Instructions

All the reagents are stored at 2-8°C. The kit is stable for 6 months from the date of receipt.

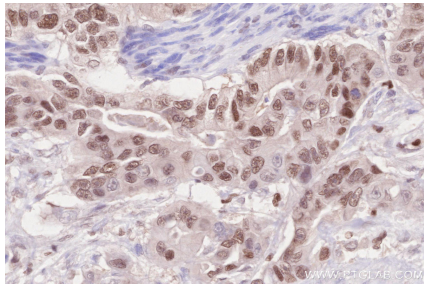
Background

Ribonuclease H2 is the major nuclear enzyme degrading cellular RNA/DNA hybrids in eukaryotes and the sole nuclease known to be able to hydrolyze ribonucleotides misincorporated during genomic replication. RNASEH2B and RNASEH2C are the non-catalytic subunits of RNase H2 complex. Defects in RNASEH2B are a cause of Aicardi-Goutieres syndrome type 2 (AGS2), a genetically heterogeneous disease with clinical features as thrombocytopenia, hepatosplenomegaly and elevated hepatic transaminases along with intermittent fever may erroneously suggest an infective process.

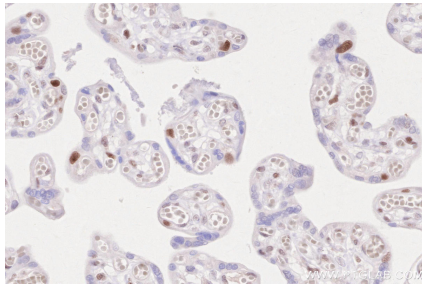
Synonyms

RNASEH2B,AGS2,Aicardi-Goutieres syndrome 2 protein

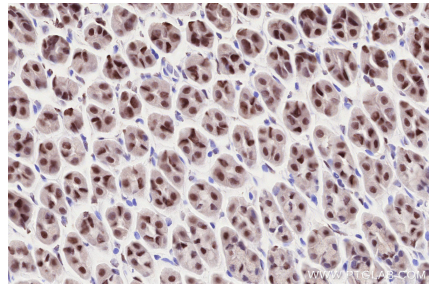
Selected Validation Data



Immunohistochemical analysis of paraffin-embedded human stomach cancer tissue slide using KHC2557 (RNASEH2B IHC Kit).



Immunohistochemical analysis of paraffin-embedded human placenta tissue slide using KHC2557 (RNASEH2B IHC Kit).



Immunohistochemical analysis of paraffin-embedded mouse stomach tissue slide using KHC2557 (RNASEH2B IHC Kit).