

IHC*easy* ZFYVE26 Ready-To-Use IHC Kit

Catalog Number: **KHC2572**

General Information

Sample type:
FFPE tissue

Cited sample type:

Reactivity:
Human, Mouse, Rat

Cited Reactivity:

Assay type:
Immunohistochemistry

Primary antibody type:
Rabbit Recombinant

Secondary antibody type:
Polymer-HRP-Goat anti-Rabbit

Kit Component

Component	Size	Concentration
Antigen Retrieval Buffer	100 mL	50×
Washing Buffer	100 mL ×2	20×
Blocking Buffer	5 mL	RTU
Primary Antibody	5 mL	RTU
Secondary Antibody	5 mL	RTU
Chromogen Component A	0.2 mL	RTU
Chromogen Component B	4 mL	RTU
Signal Enhancer	5 mL	RTU
Counter Staining Reagent	5 mL	RTU
Mounting Media	5 mL	RTU
Control Slide	1 slide (Optional)	FFPE
Datasheet	1 Copy	
Manual	1 Copy	

Storage Instructions

All the reagents are stored at 2-8°C. The kit is stable for 6 months from the date of receipt.

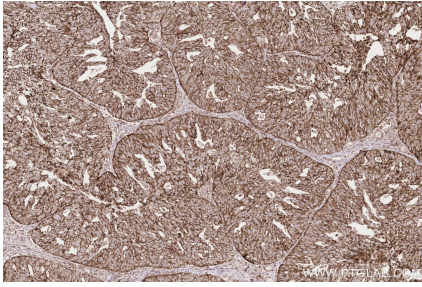
Background

ZFYVE26 is a large protein of 2539 amino acid residues and contains an FYVE domain that confers to the protein binding affinity to the membrane-associated phosphatidylinositol 3-phosphate (PtdIns3P). ZFYVE26 has a diffuse cytoplasmic distribution and partially colocalizes with early endosomes, the endoplasmic reticulum, microtubules, and vesicles. It also localizes to the midbody during cytokinesis.

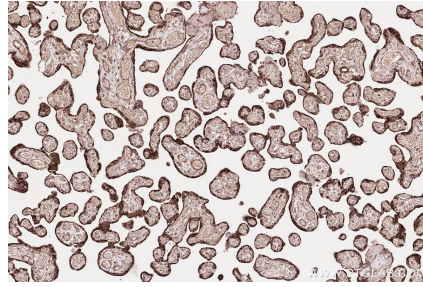
Synonyms

ZFYVE26, KIAA0321, Spastizin, SPG15

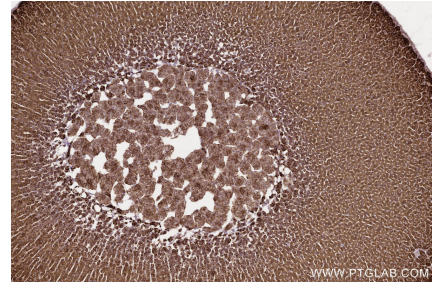
Selected Validation Data



Immunohistochemical analysis of paraffin-embedded human ovary cancer tissue slide using KHC2572 (ZFYVE26 IHC Kit).



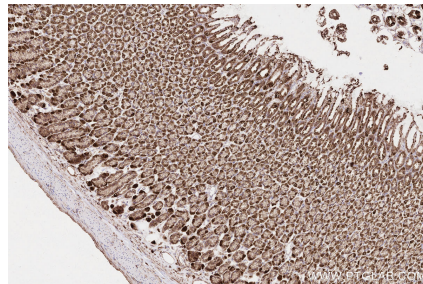
Immunohistochemical analysis of paraffin-embedded human placenta tissue slide using KHC2572 (ZFYVE26 IHC Kit).



Immunohistochemical analysis of paraffin-embedded mouse adrenal gland tissue slide using KHC2572 (ZFYVE26 IHC Kit).



Immunohistochemical analysis of paraffin-embedded rat adrenal gland tissue slide using KHC2572 (ZFYVE26 IHC Kit).



Immunohistochemical analysis of paraffin-embedded rat stomach tissue slide using KHC2572 (ZFYVE26 IHC Kit).